

PORTFOLIO  
FRANZFRAMINGS TEAM

THIS DOCUMENT CONTAINS ONLY SELECTED DRAWINGS AND SCREENSHOTS, WE HAVE COMPLETED MUCH MORE  
PROJECTS THAN REPRESENTED HERE.  
ALL REPRESENTED PROJECTS ARE MADE BY FRANZFRAMINGS TEAM ONLY

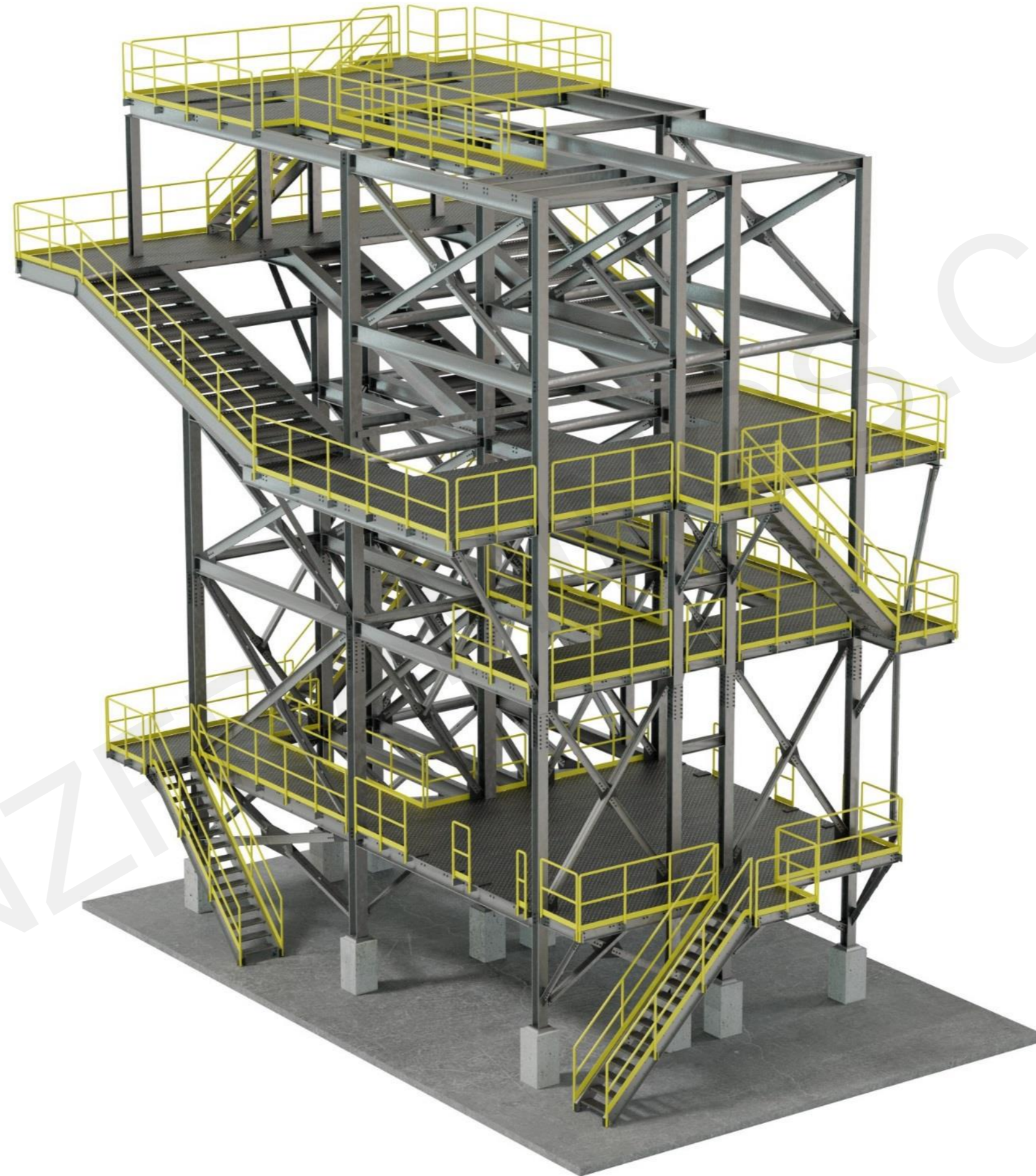
FOR PERSONAL USING ONLY. ALL RIGHTS RESERVED

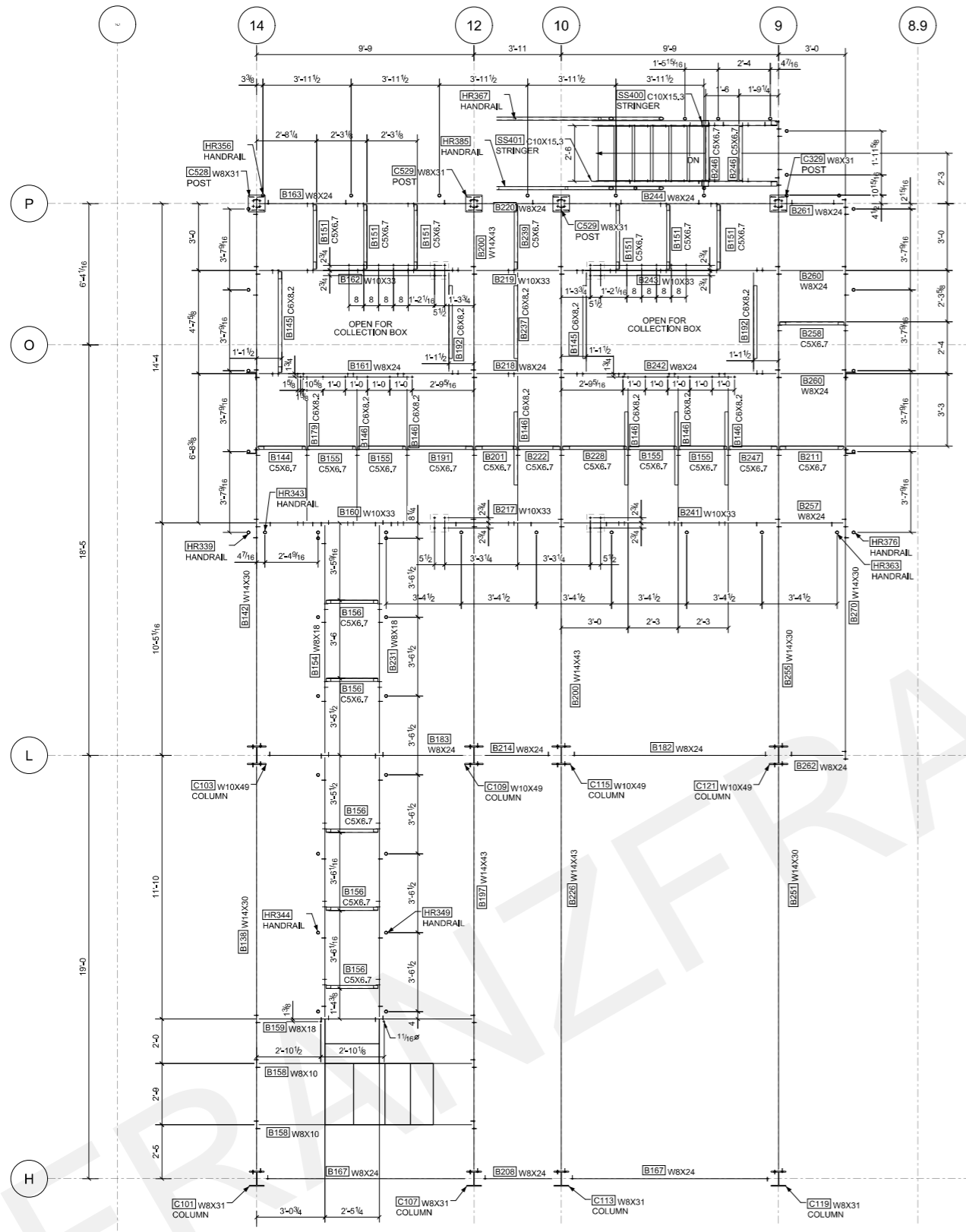
FRANZFRAMINGS.COM FRANZFRAMINGS@GMAIL.COM

## INDUSTRIAL PLATFORM

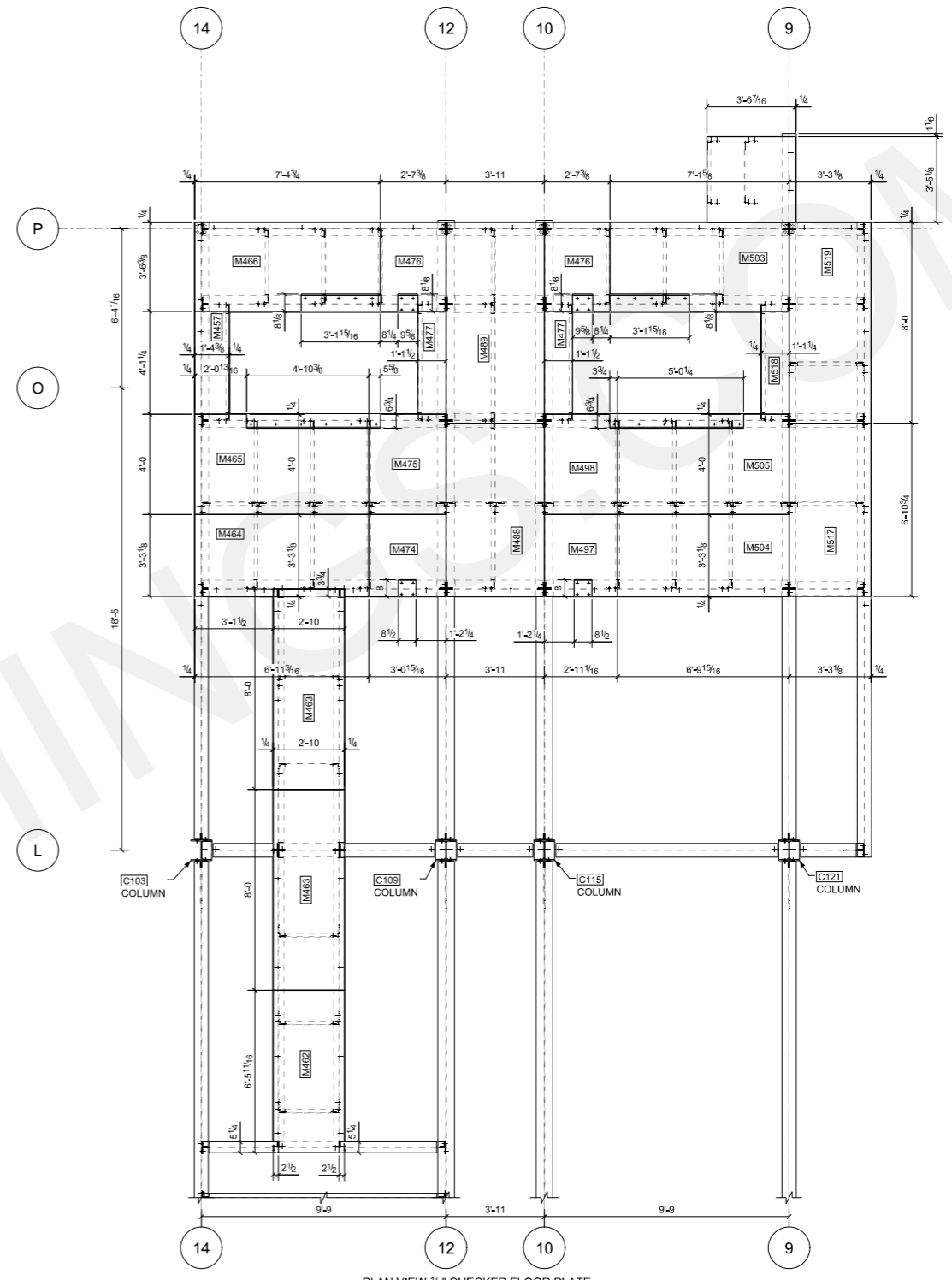
### SCOPE OF WORK:

- ANCHOR BOLTS
- STEEL COLUMNS
- STEEL BEAMS
- STEEL BRACES
- STEEL STAIRS
- STEEL RAILINGS
- FLOORING STEEL PLATES.

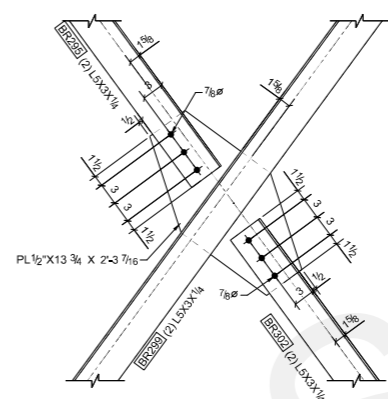
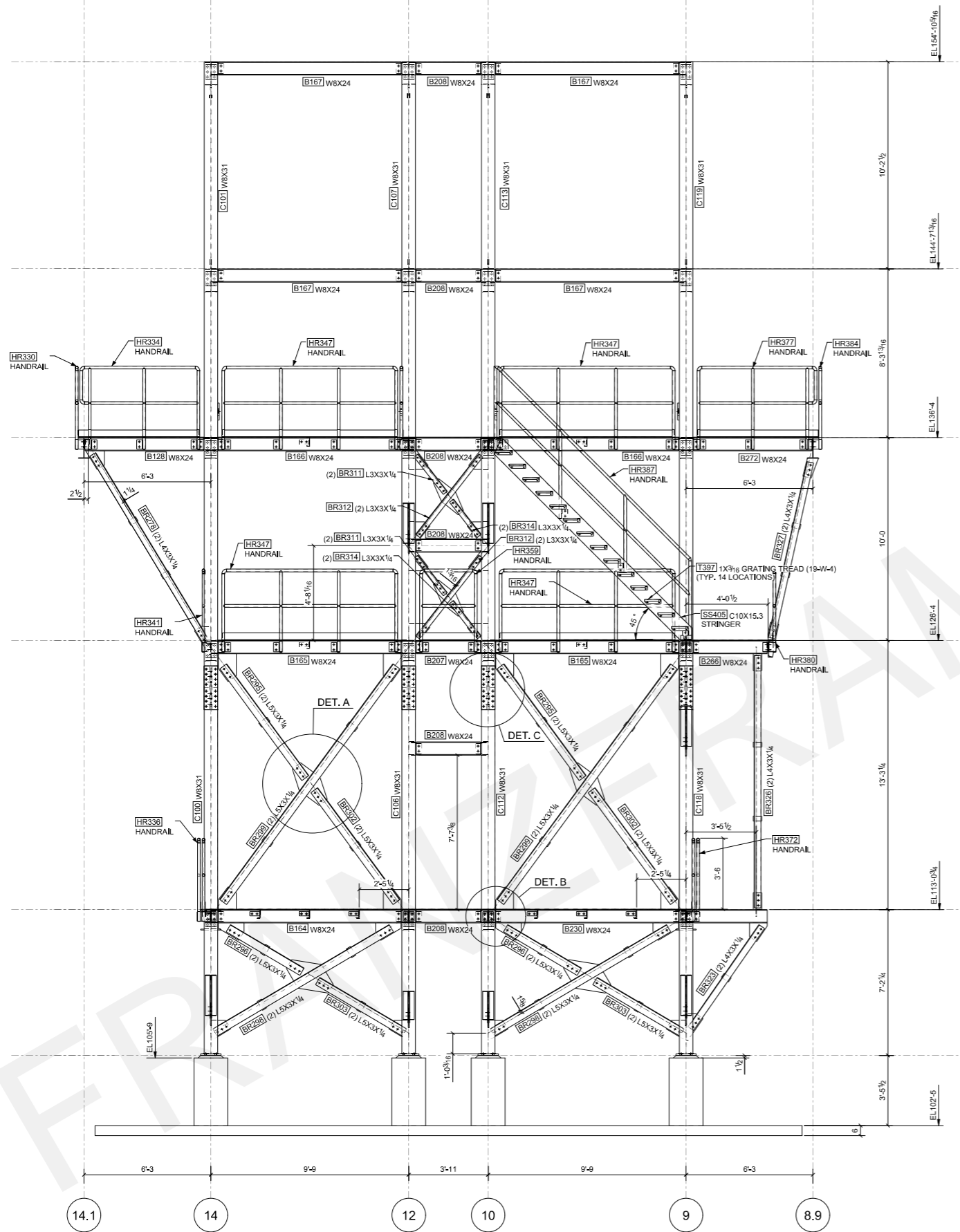




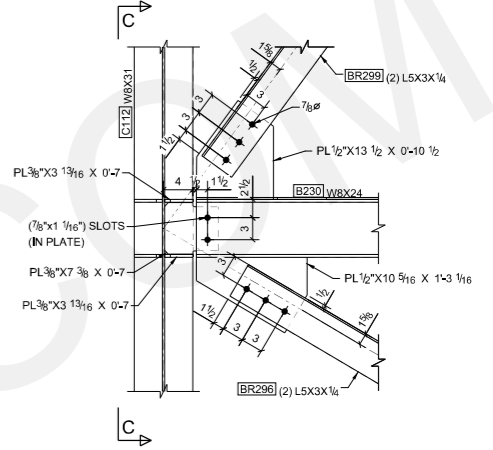
PLAN VIEW  
TOS EL. 154'-10 9/16" (UNO)



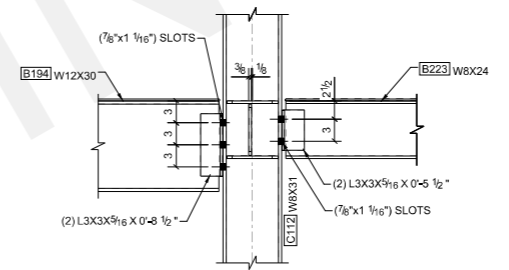
PLAN VIEW 1/4" CHECKER FLOOR PLATE



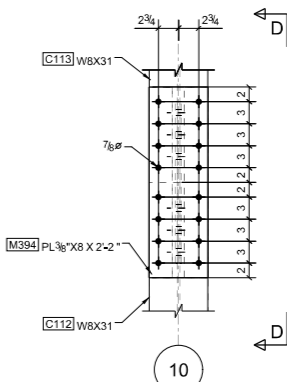
DETAIL A  
TYP. FOR L5X3X1/4



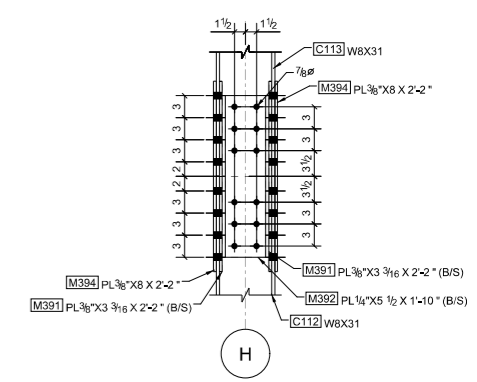
DETAIL B  
TYP. FOR L5X3X1/4



C-C

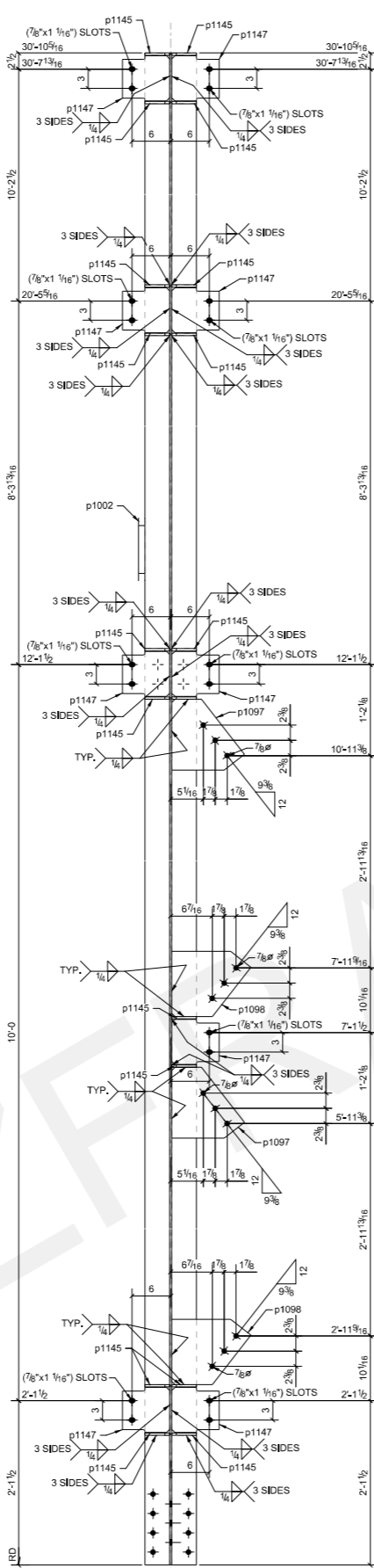
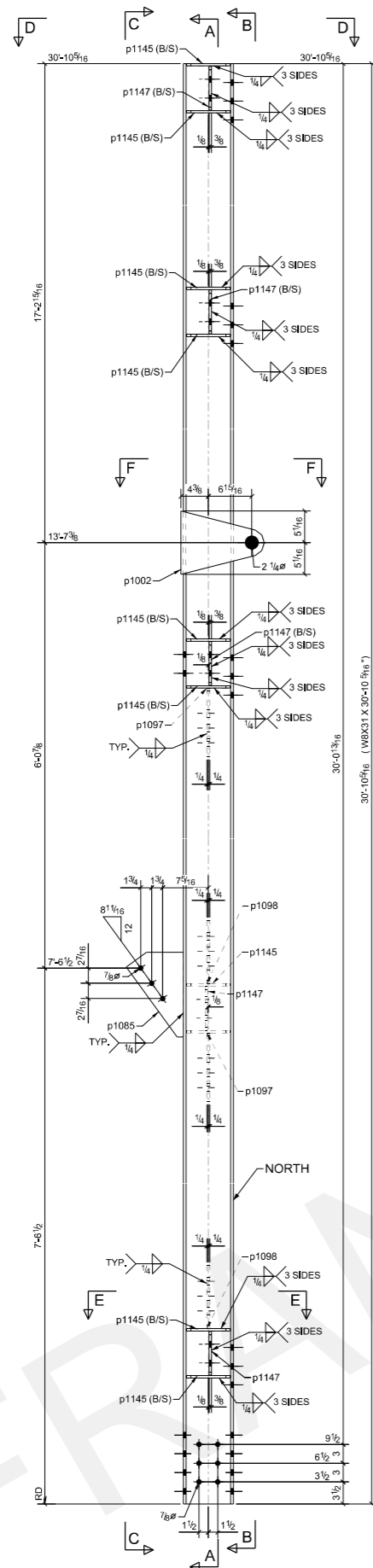


DETAIL C  
TYP. FOR W8X31



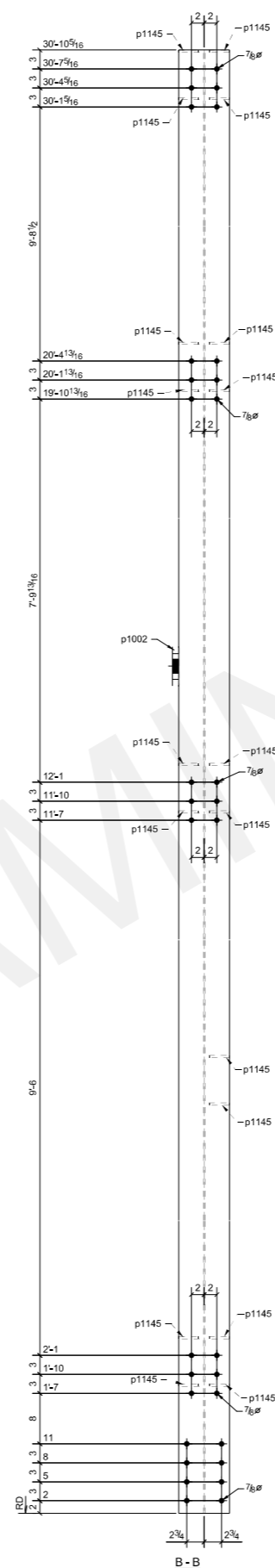
D-D



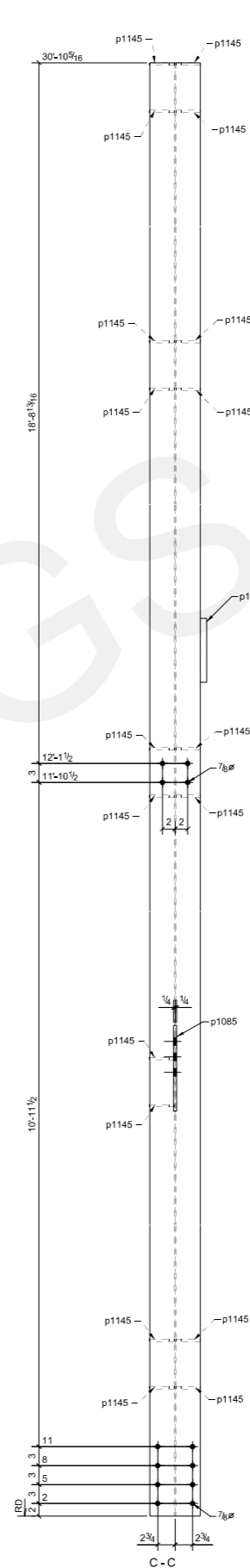


A-A  
ONE - COLUMN - C113

6	3/4"φ x 2"
16	3/4"φ x 2 1/4"

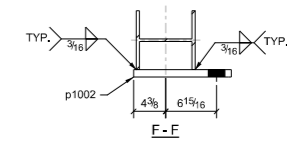
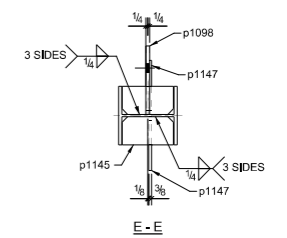
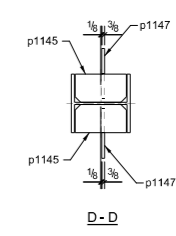


B-B



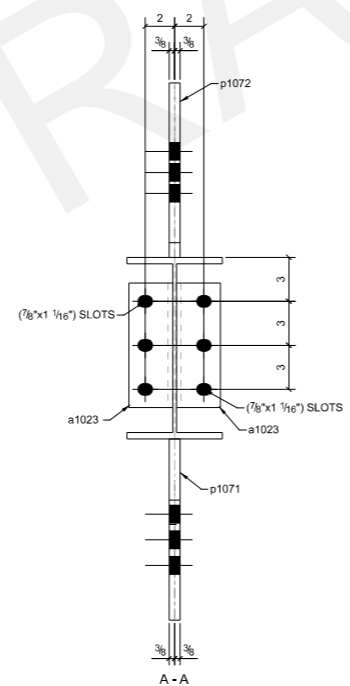
C-C

BILL OF MATERIAL					
SHIP MARK	PIECE MARK	QTY	DESCRIPTION	LENGTH	REMARKS
C113		1	WBX31	30'-10 5/16"	SQ2 A992 GALVANIZED
	p1002	1	PL1"X9 13/16"	1'-2 3/16"	A36 GALVANIZED
	p1085	1	PL1/2"X8 3/4"	1'-2 7/16"	A36 GALVANIZED
	p1097	2	PL1/2"X11 5/16"	0'-11"	A36 GALVANIZED
	p1098	2	PL1/2"X12 5/16"	0'-10 1/8"	A36 GALVANIZED
	p1145	18	PL3/8"X3 13/16"	0'-7"	A36 GALVANIZED
	p1147	9	PL3/8"X7 3/8"	0'-7"	A36 GALVANIZED
			FIELD BOLTS (EXACT COUNT)		
		6	3/4"φ A325N	0'-2"	Site
		16	3/4"φ A325N	0'-2 1/4"	Site



**BILL OF MATERIAL**

SHIP MARK	PIECE MARK	QTY	DESCRIPTION	LENGTH	REMARKS
B140		3	W12X30	17'-5 7/8"	SQ2 A992 GALVANIZED
	a1023	12	L3X3X5/16	0'-8 1/2"	A36 GALVANIZED
	p1071	6	PL3/4"X12 3/8"	1'-4"	A36 GALVANIZED
	p1072	6	PL3/4"X11 7/8"	1'-11 7/8"	A36 GALVANIZED
			FIELD BOLTS (EXACT COUNT)		
		36	3/4"φ A325N	0'-2"	Site



3 - BEAMS - B140

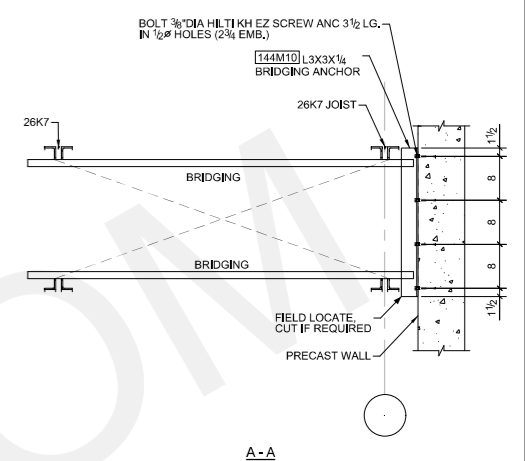
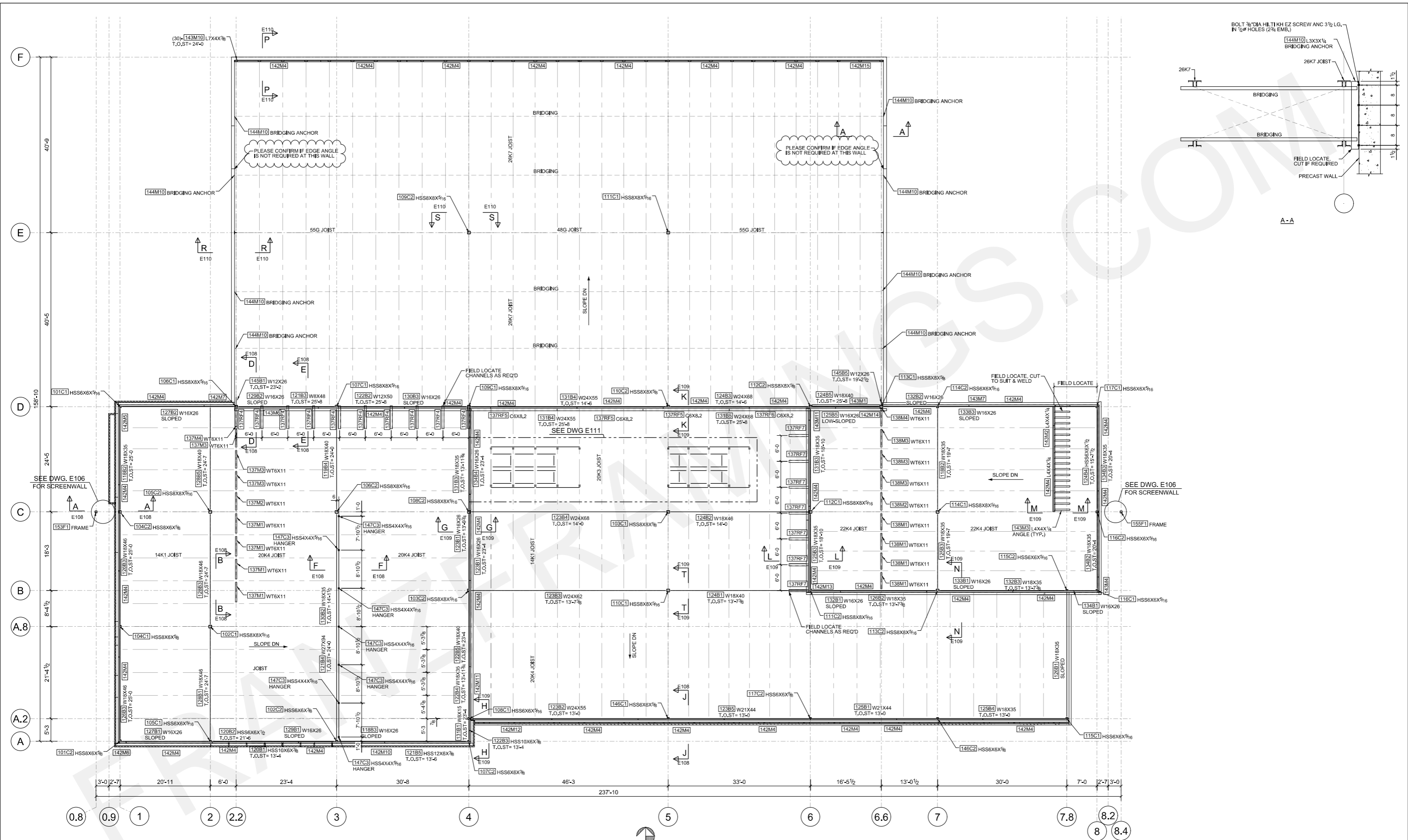
12 3/4"φ x 2"

## HEADQUARTERS BUILDING

### SCOPE OF WORK:

- STEEL COLUMNS
- STEEL BEAMS
- STEEL BRACES
- MISCELLANEOUS STEEL.
- BEARING PLATES.





PLEASE CONFIRM IF EDGE ANGLE IS NOT REQUIRED AT THIS WALL

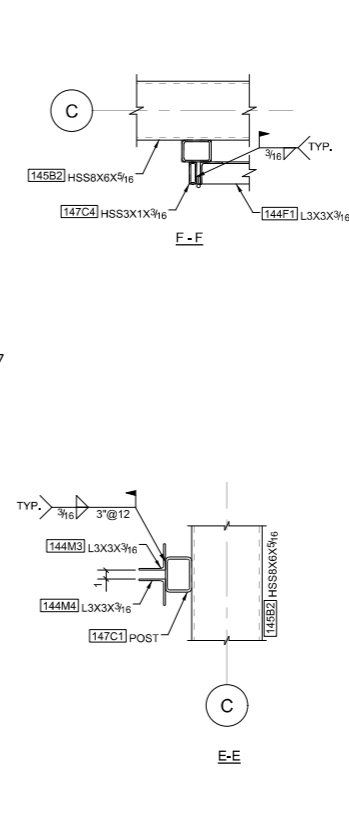
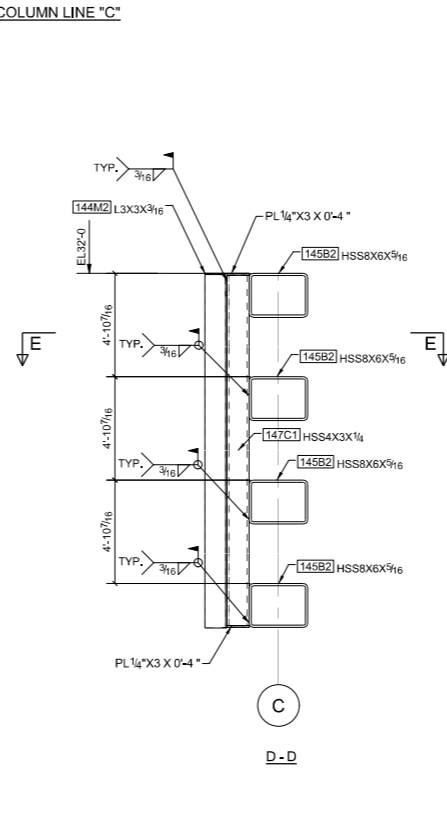
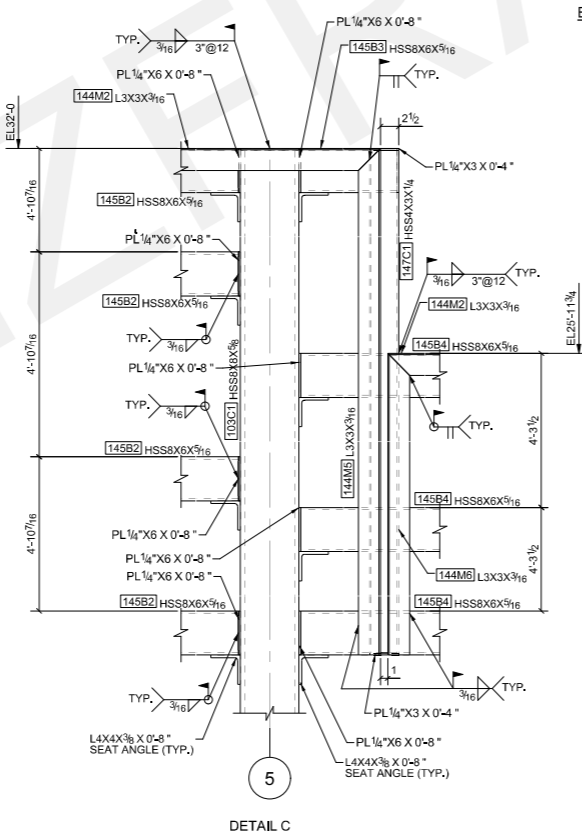
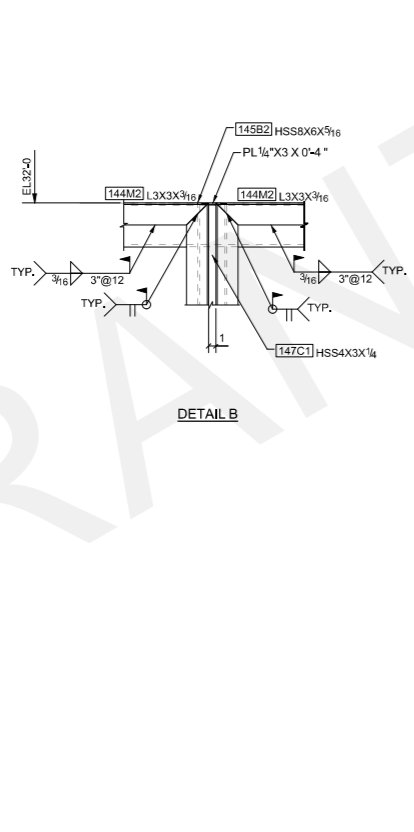
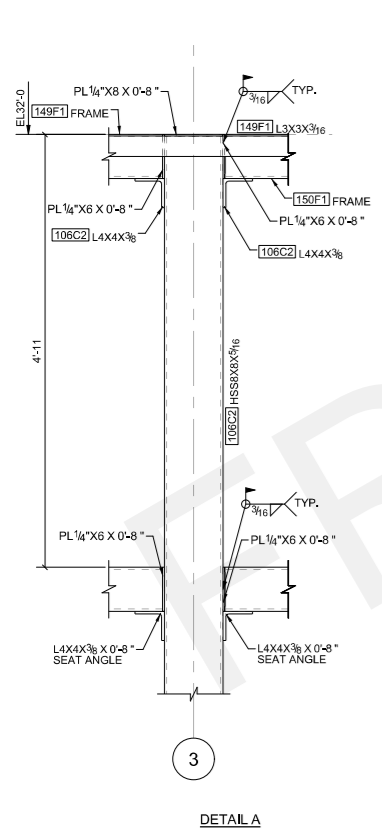
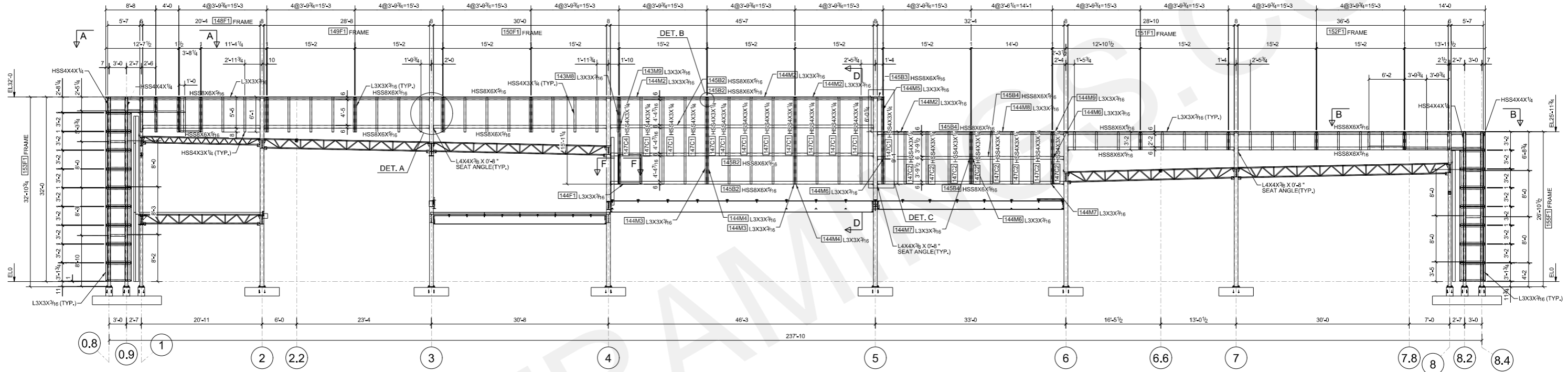
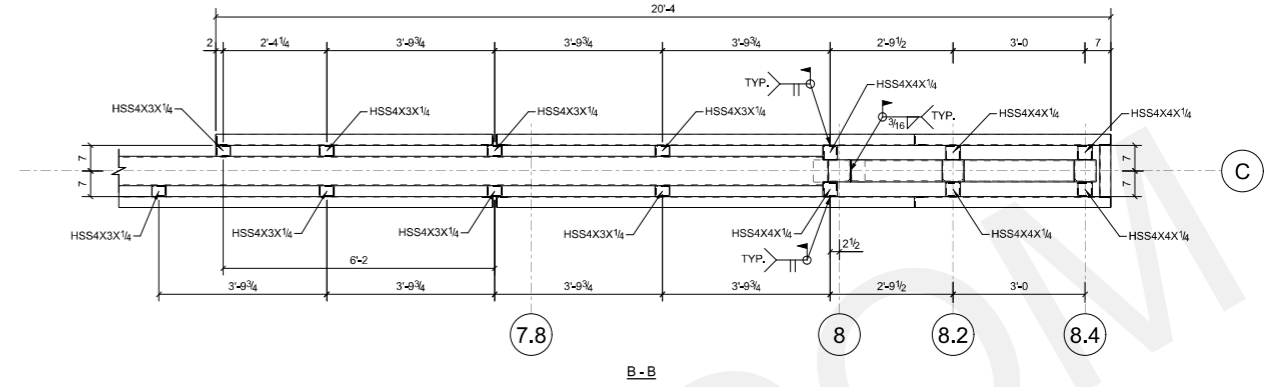
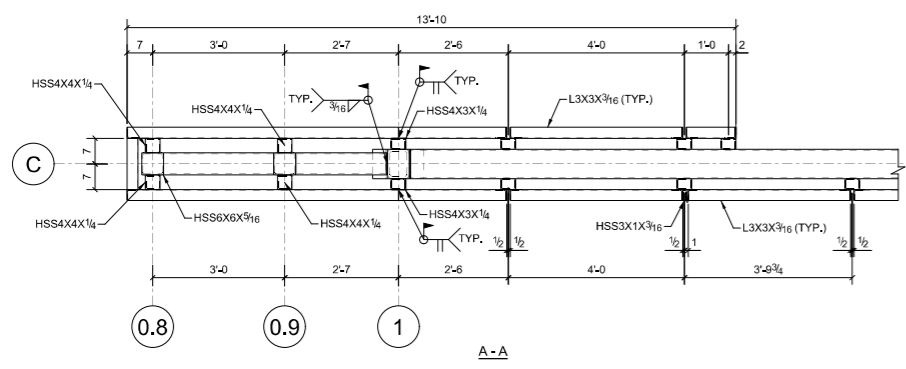
PLEASE CONFIRM IF EDGE ANGLE IS NOT REQUIRED AT THIS WALL

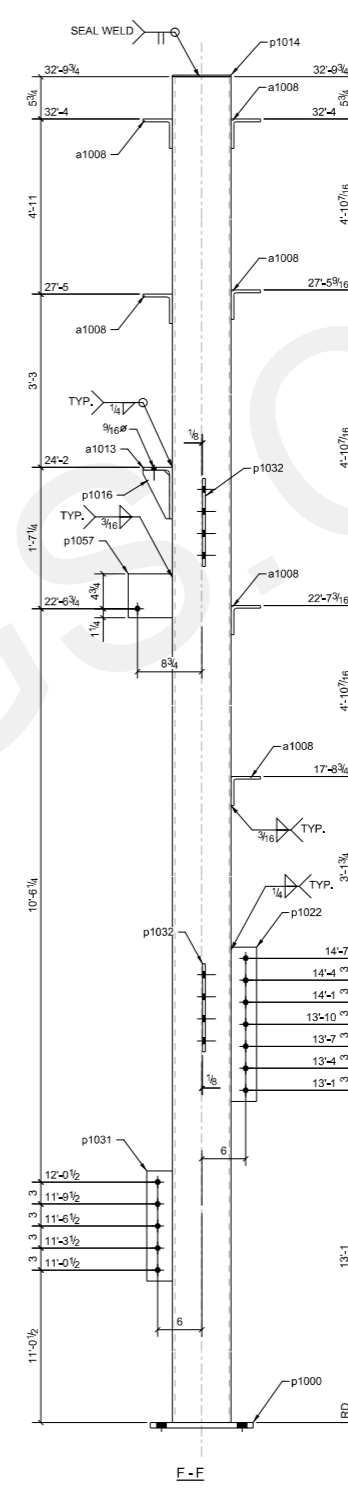
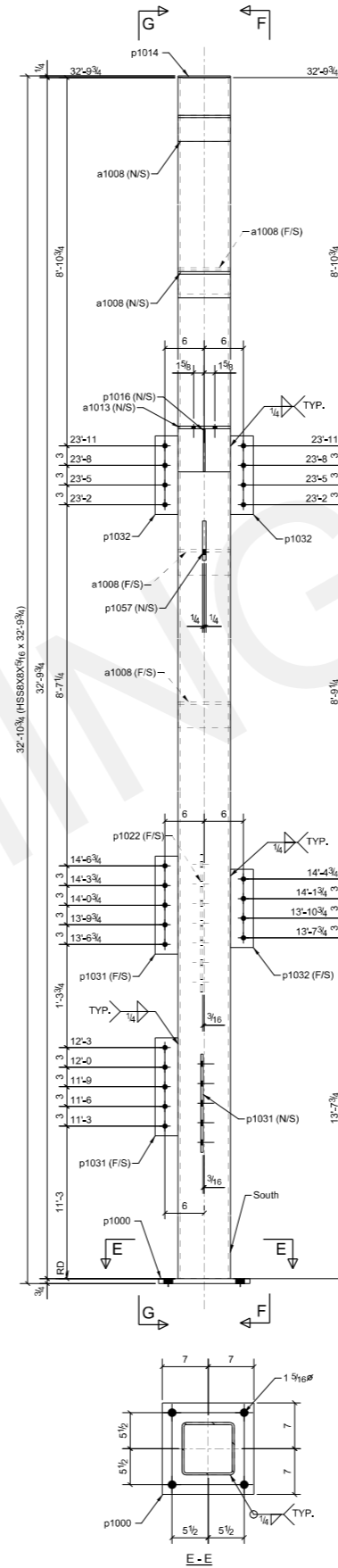
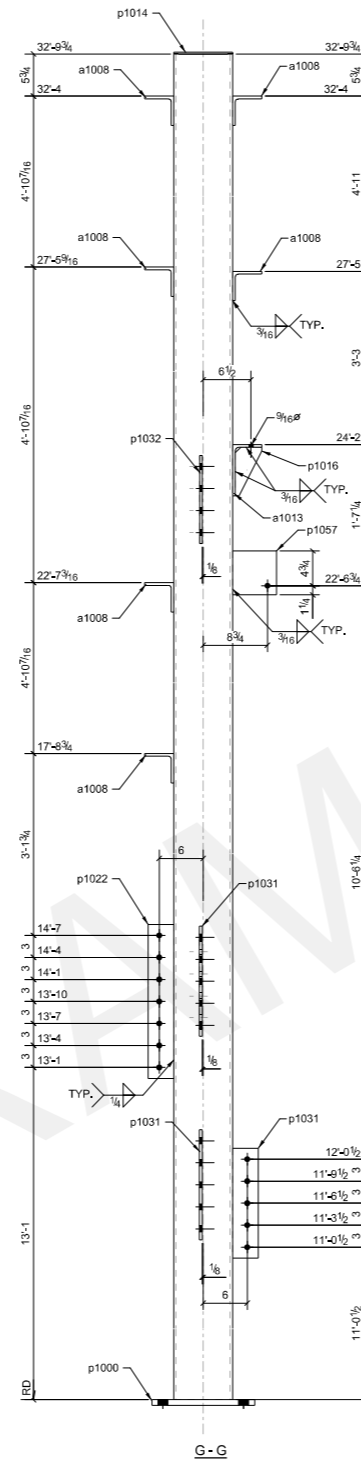
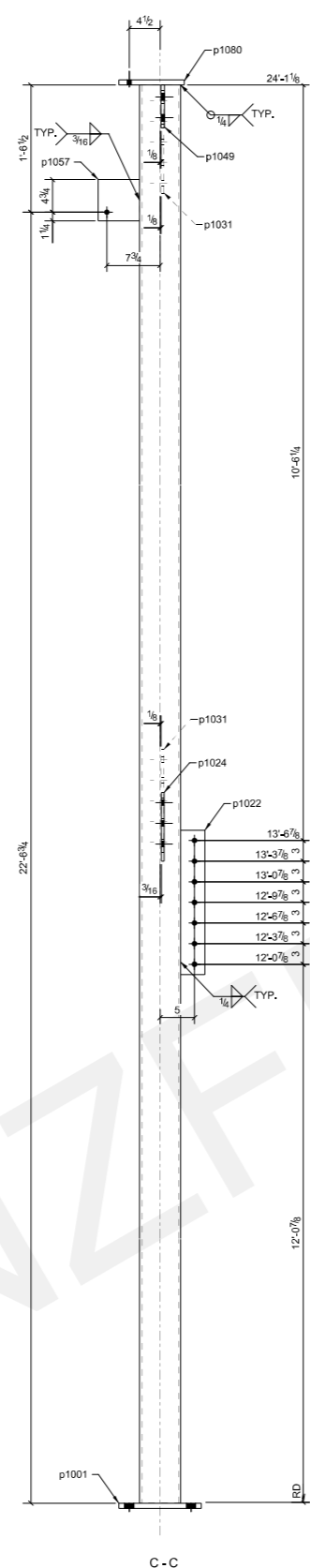
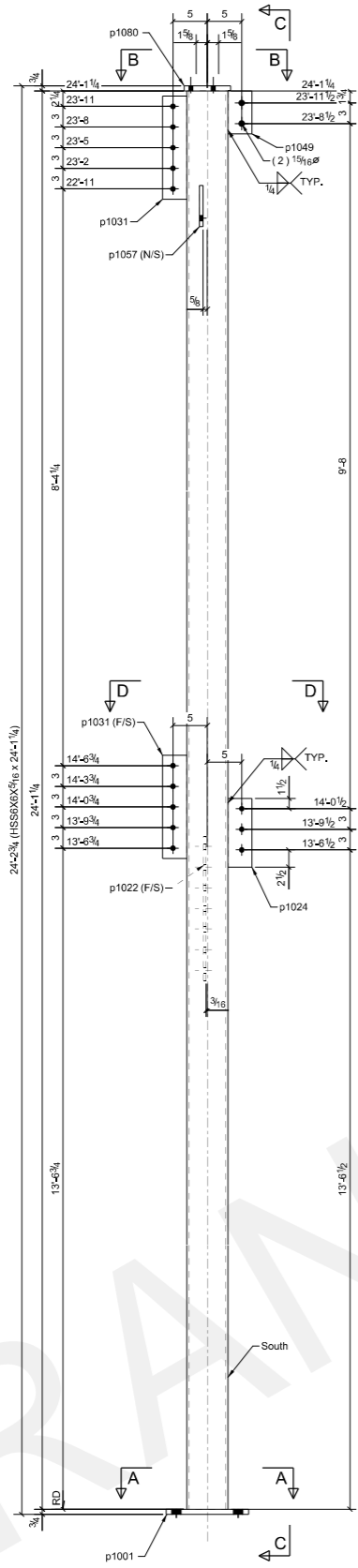
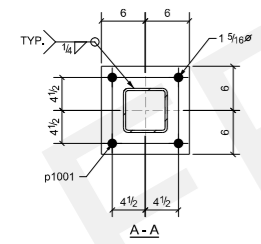
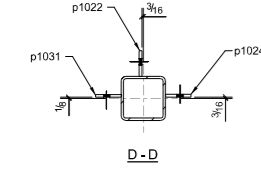
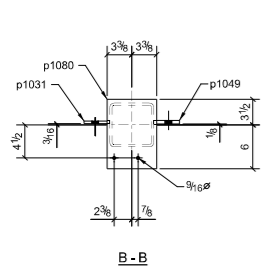
SEE DWG. E106 FOR SCREENWALL

SEE DWG. E106 FOR SCREENWALL

ROOF FRAMING PLAN







ONE - COLUMN - 108C1

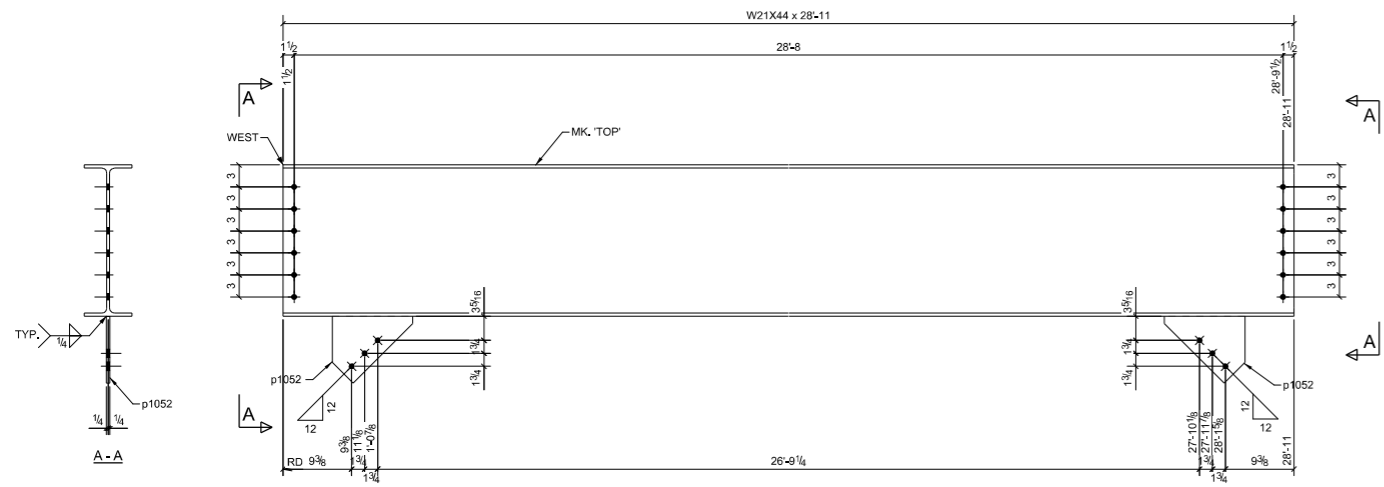
2 1/2" Φ x 2"

ONE - COLUMN - 108C2

2 1/2" Φ x 1 3/4"

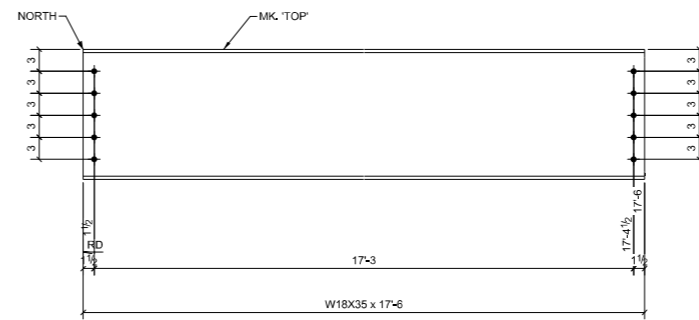
BILL OF MATERIAL

SHIP MARK	PIECE MARK	QTY	DESCRIPTION	LENGTH	REMARKS
108C1		1	HSS6X6X5/16	24'-1 1/4"	SQ2 A305-GR.3
	p1001	1	PL3/4"x12"	1'-0"	A36
	p1022	1	PL3/8"x3 1/2"	1'-9"	A36
	p1024	1	PL3/8"x3 1/2"	0'-10"	A36
	p1031	2	PL3/8"x3 1/2"	1'-3"	A36
	p1049	1	PL1/2"x3 1/2"	0'-6 1/4"	A36
	p1057	1	PL1/2"x6"	0'-6"	A36
	p1080	1	PL3/4"x9 1/2"	0'-6 3/4"	A36
			FIELD BOLTS (EXACT COUNT)		
		2	1/2" Φ A325N	0'-2"	Site
108C2		1	HSS6X6X5/16	32'-9 3/4"	SQ2 A305-GR.3
	a1008	6	L4X4X3/8	0'-8"	A36
	a1013	1	L7X4X3/8	0'-8"	A36
	p1000	1	PL3/4"x14"	1'-2"	A36
	p1014	1	PL1/4"x8"	0'-8"	A36
	p1016	1	PL1/4"x3 5/8"	0'-6 5/8"	A36
	p1022	1	PL3/8"x3 1/2"	1'-9"	A36
	p1031	3	PL3/8"x3 1/2"	1'-3"	A36
	p1032	3	PL3/8"x3 1/2"	1'-0"	A36
	p1057	1	PL1/2"x6"	0'-6"	A36
			FIELD BOLTS (EXACT COUNT)		
		2	1/2" Φ A325N	0'-1 3/4"	Site



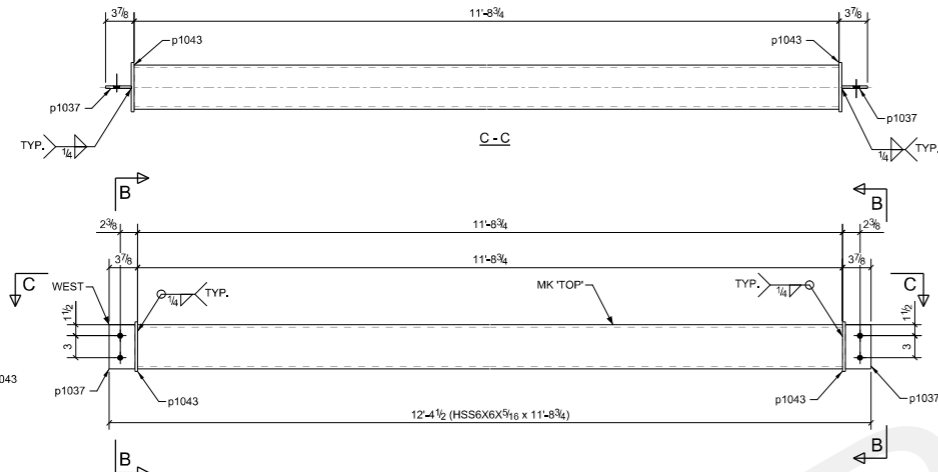
ONE - BEAM - 125B1

12 3/4"φ x 2"



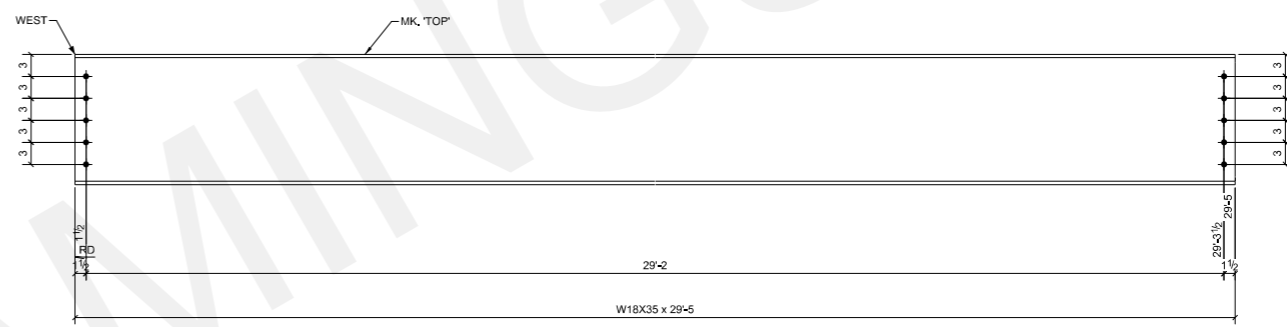
2 - BEAMS - 125B3

10 3/4"φ x 2"



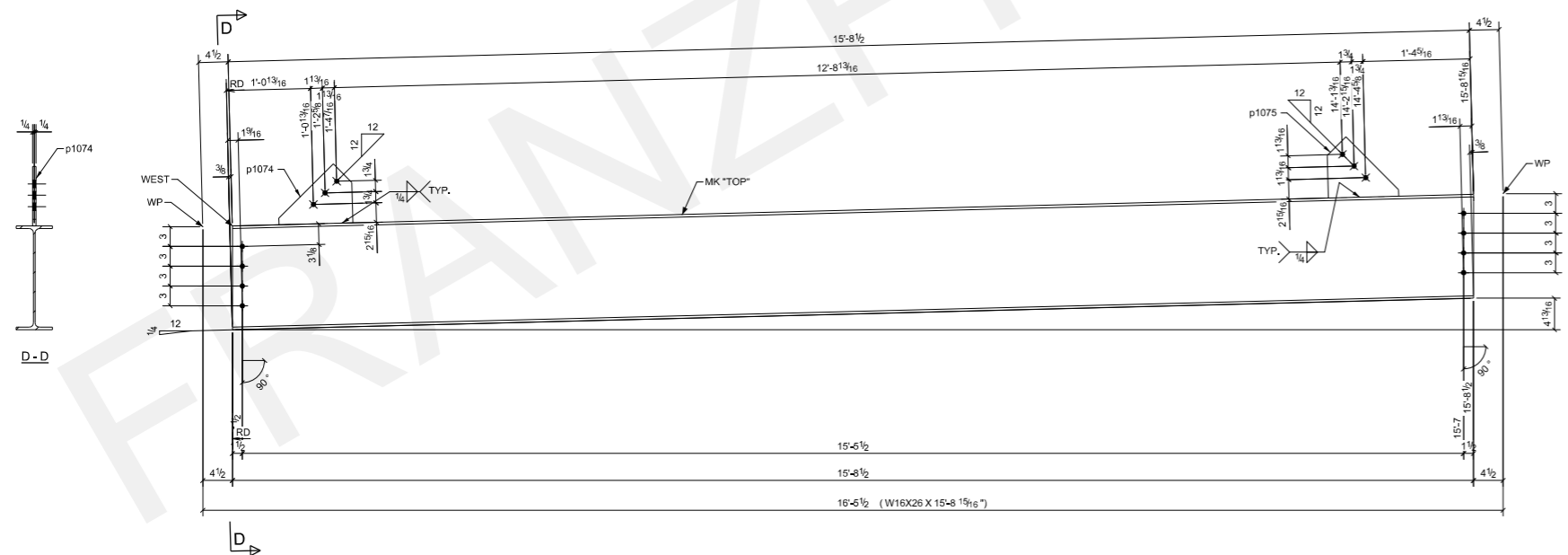
ONE - BEAM - 125B2

4 3/4"φ x 2"



ONE - BEAM - 125B4

10 3/4"φ x 2"



ONE - BEAM - 125B5

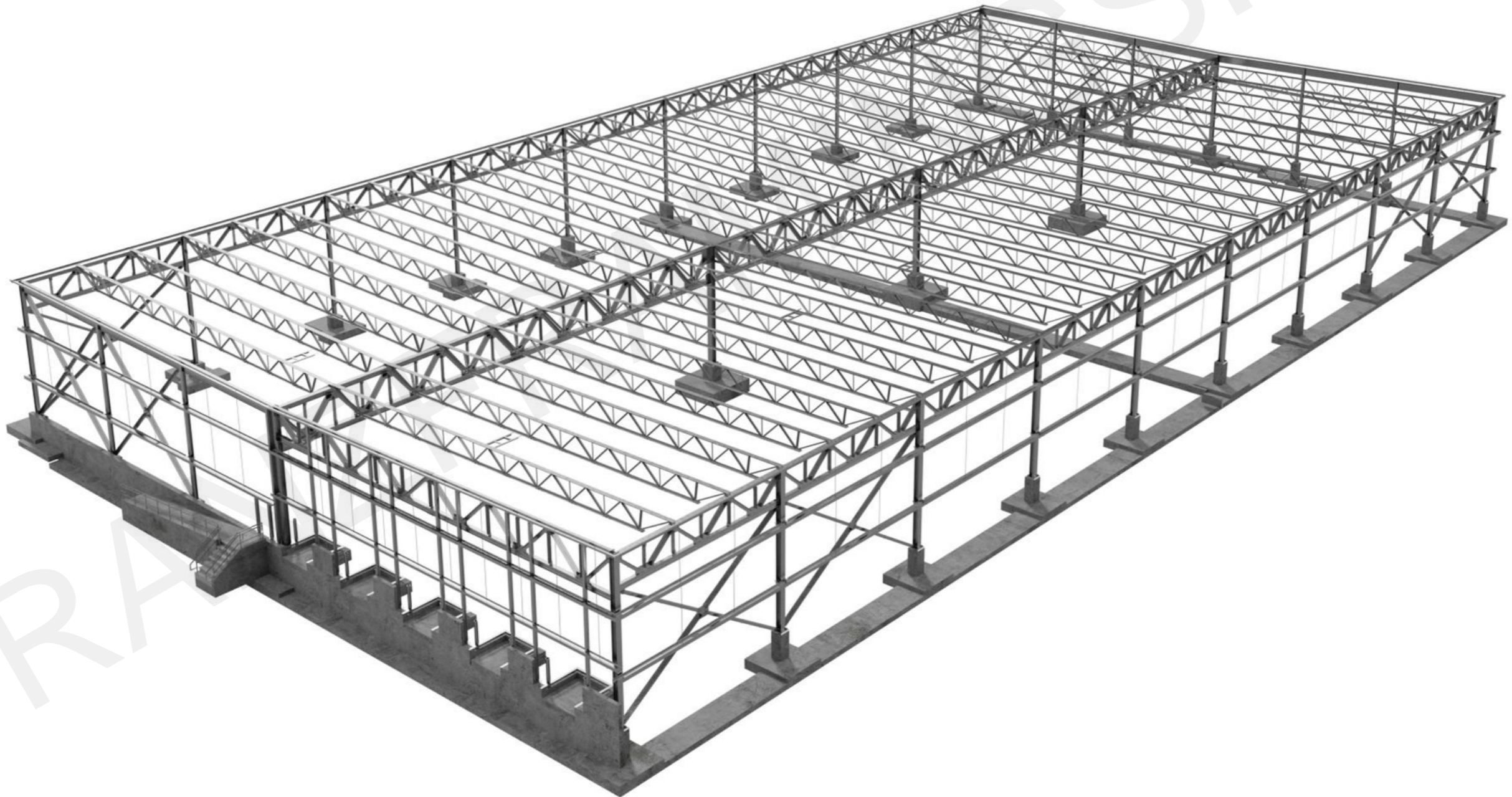
8 3/4"φ x 2"

BILL OF MATERIAL					
SHIP MARK	PIECE MARK	QTY	DESCRIPTION	LENGTH	REMARKS
125B1		1	W21X44	28'-11"	SQ2 A992
	p1052	2	PL1/2"X8 7/16"	1'-0 3/16"	A36
			FIELD BOLTS (EXACT COUNT)		
		12	3/4"φ A325N	0'-2"	Site
125B2		1	HSS6X6X5/16	11'-8 3/4"	SQ2 A500-GR.B
	p1037	2	PL3/8"X3 1/2"	0'-6"	A36
	p1043	2	PL3/8"X6 3/4"	0'-6 3/4"	A36
			FIELD BOLTS (EXACT COUNT)		
		4	3/4"φ A325N	0'-2"	Site
125B3		2	W18X35	17'-6"	SQ2 A992
			FIELD BOLTS (EXACT COUNT)		
		20	3/4"φ A325N	0'-2"	Site
125B4		1	W18X35	29'-5"	SQ2 A992
			FIELD BOLTS (EXACT COUNT)		
		10	3/4"φ A325N	0'-2"	Site
125B5		1	W16X26	15'-8 15/16"	BE1/4 A992
	p1074	1	PL1/2"X8 7/16"	1'-0 3/8"	A36
	p1075	1	PL1/2"X8 7/16"	1'-0 1/16"	A36
			FIELD BOLTS (EXACT COUNT)		
		8	3/4"φ A325N	0'-2"	Site

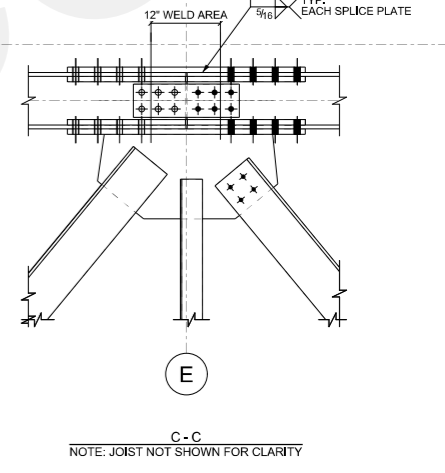
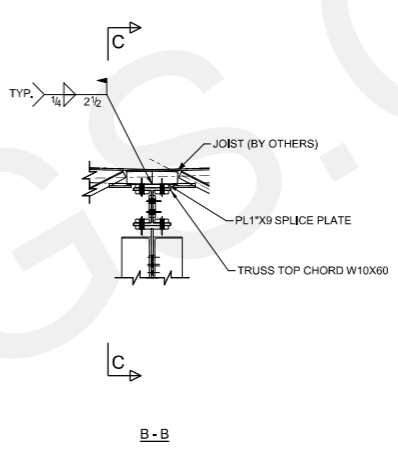
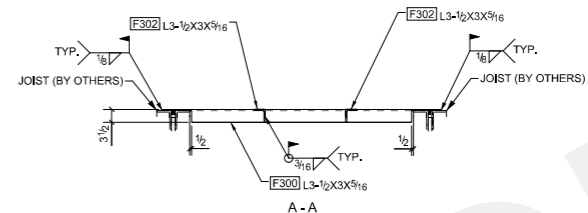
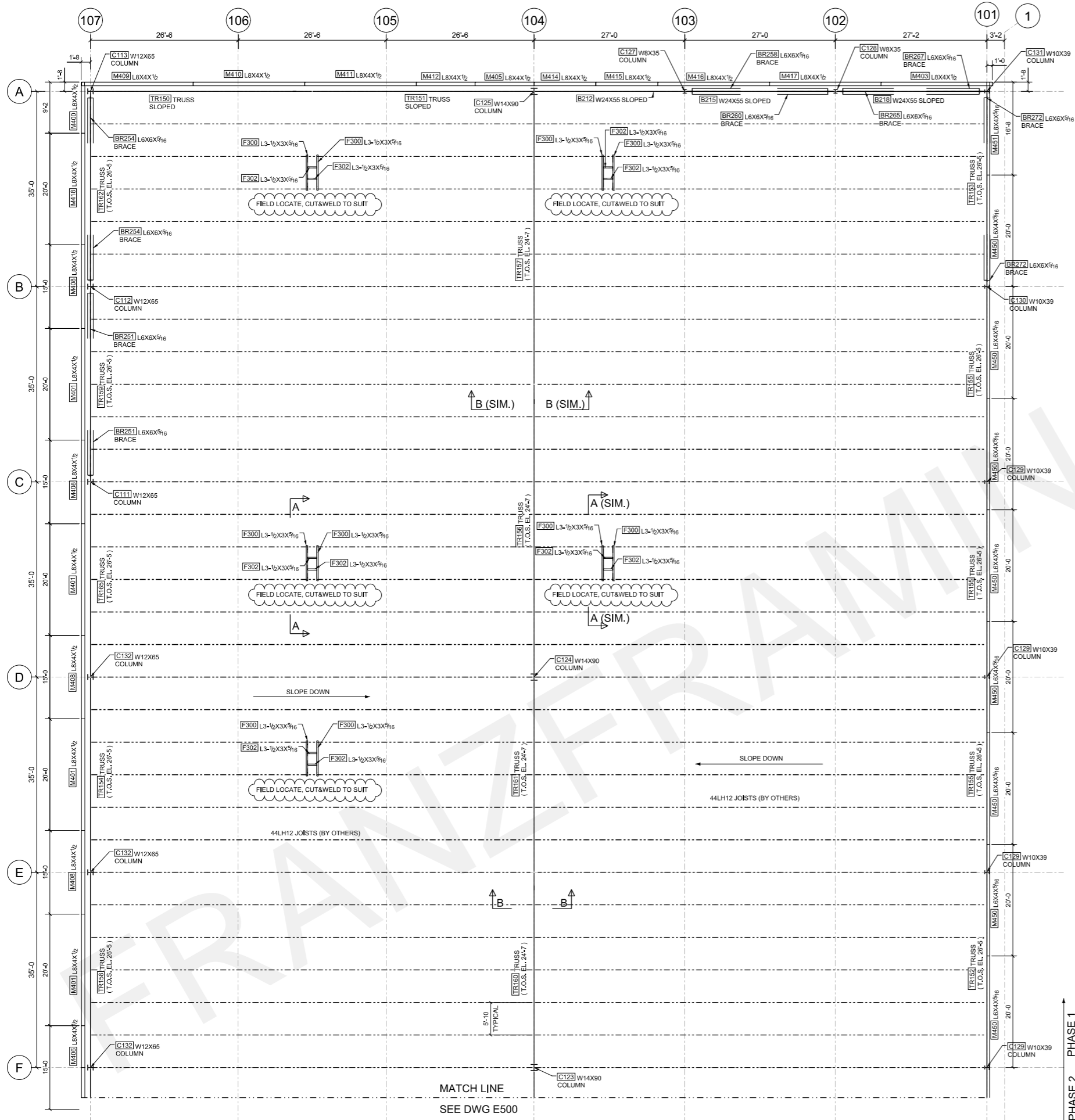
## INDUSTRIAL BUILDING

### SCOPE OF WORK:

- STEEL COLUMNS
- STEEL TRUSSES
- STEEL BEAMS
- STEEL BRACES
- BEARING PLATES.

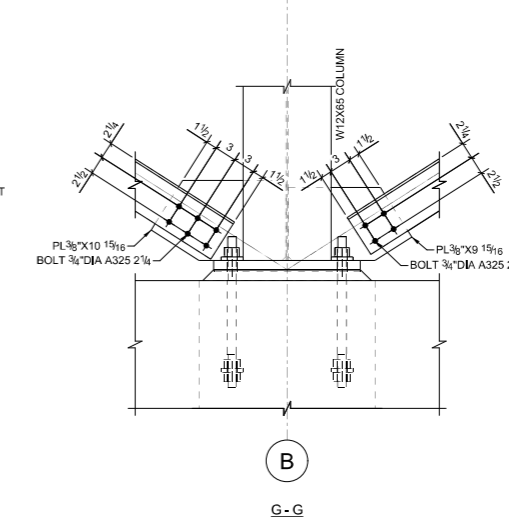
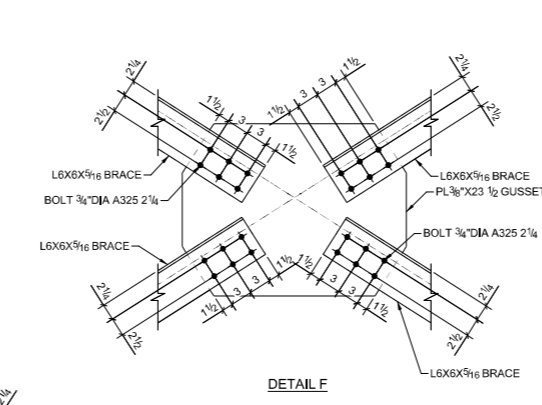
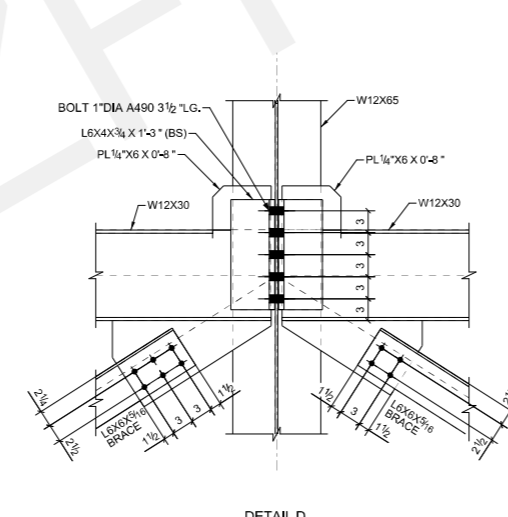
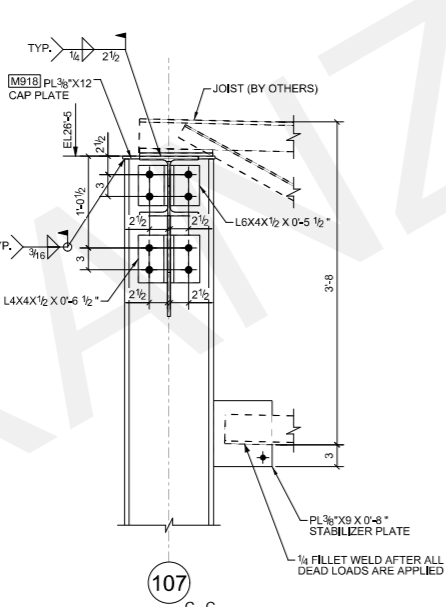
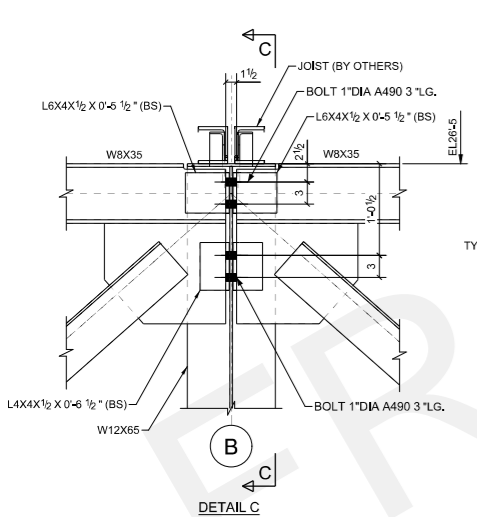
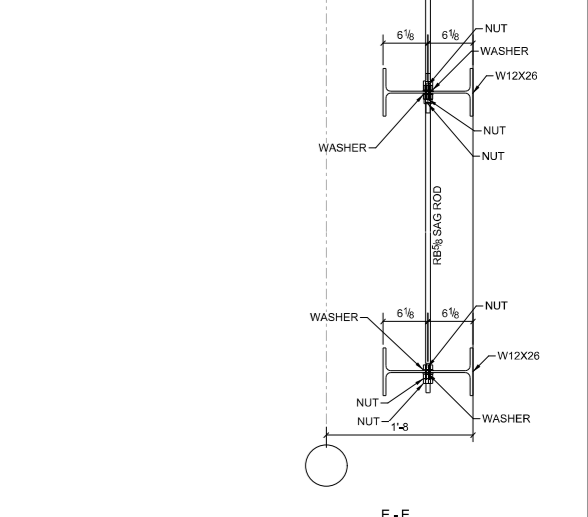
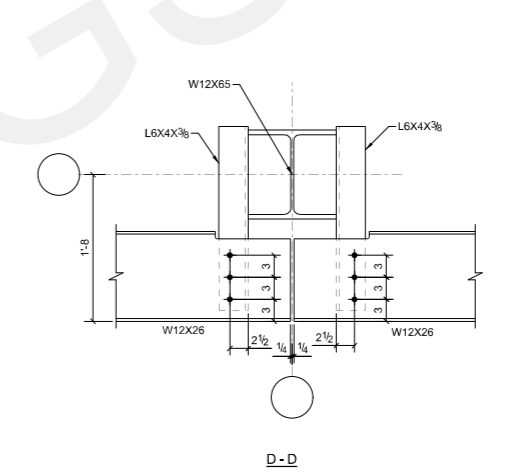
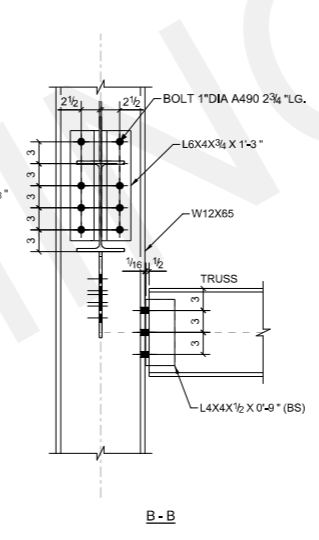
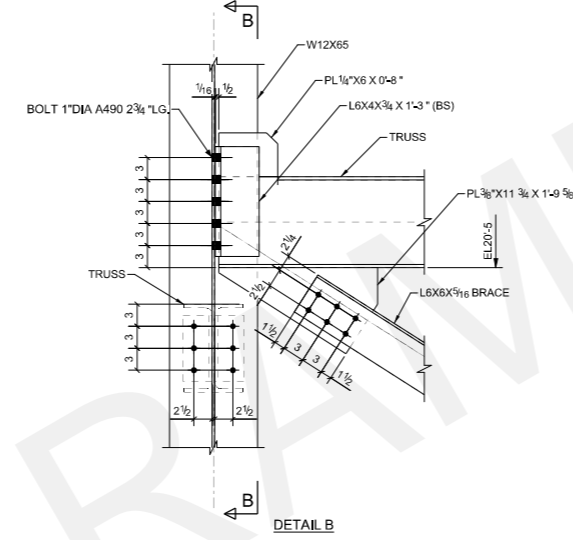
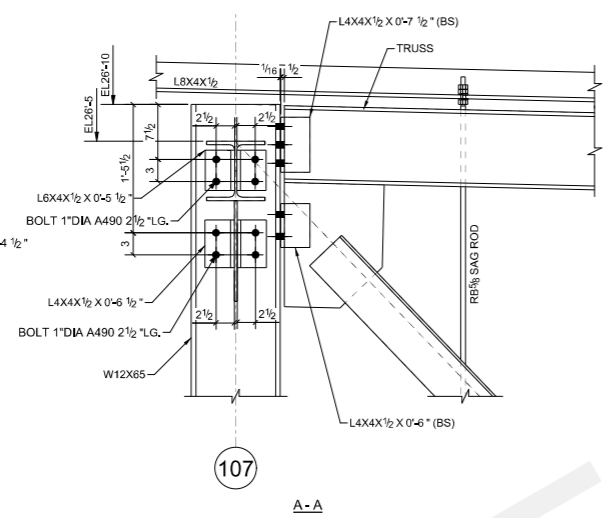
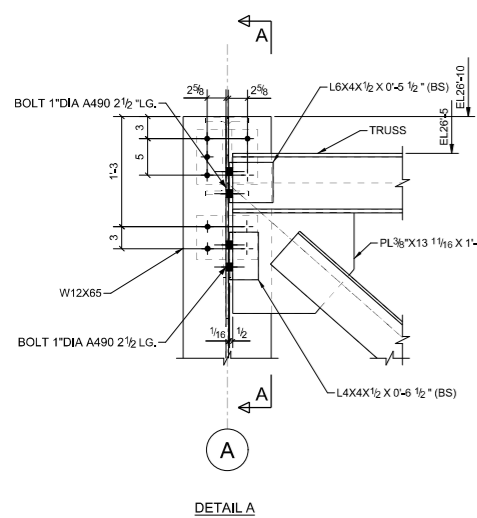
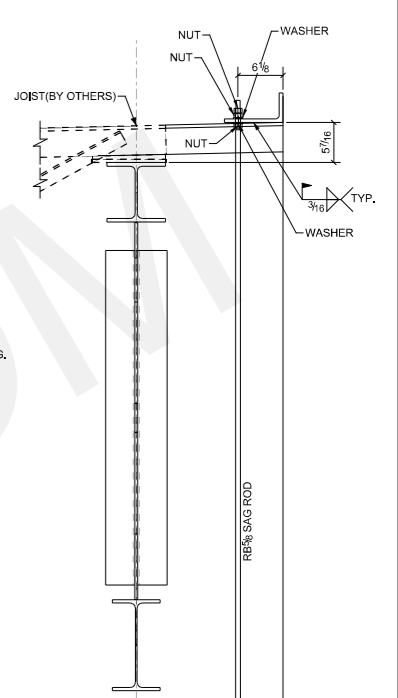
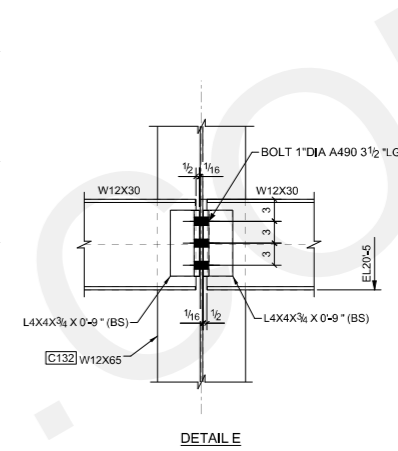
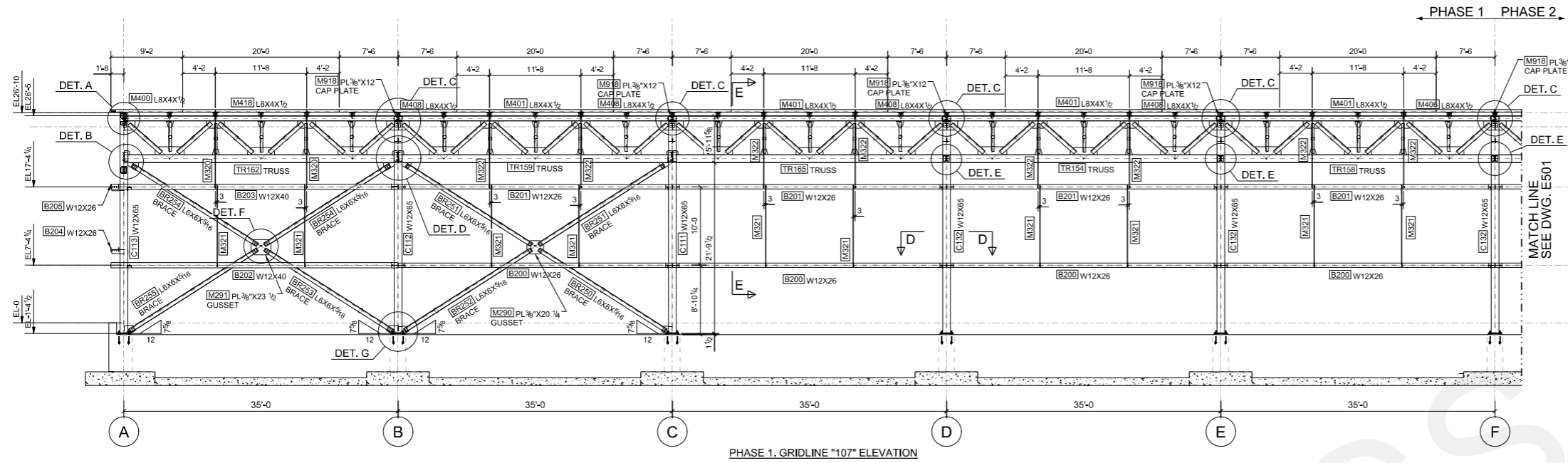






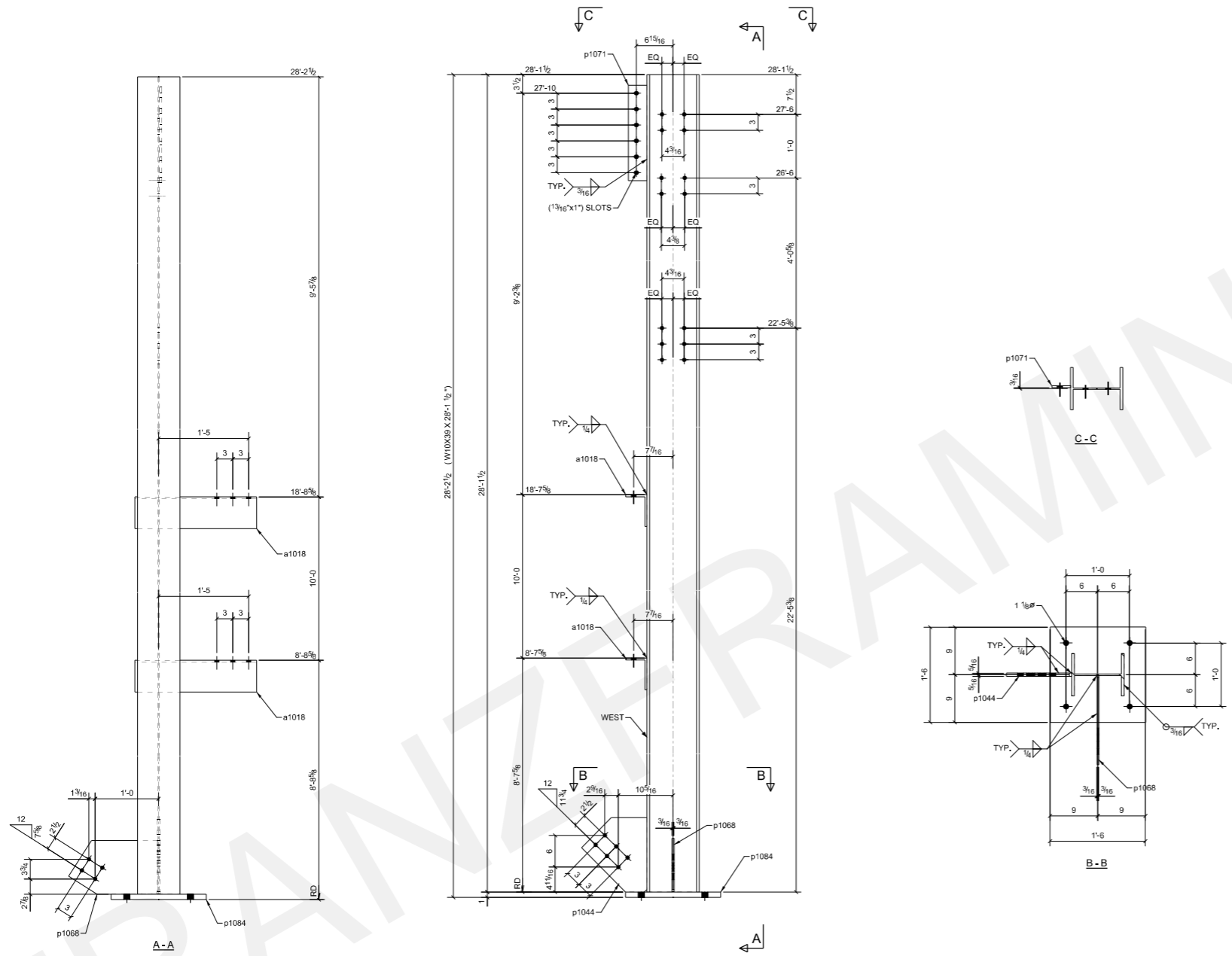
MATCH LINE  
SEE DWG E500

PHASE 1. FRAMING PLAN



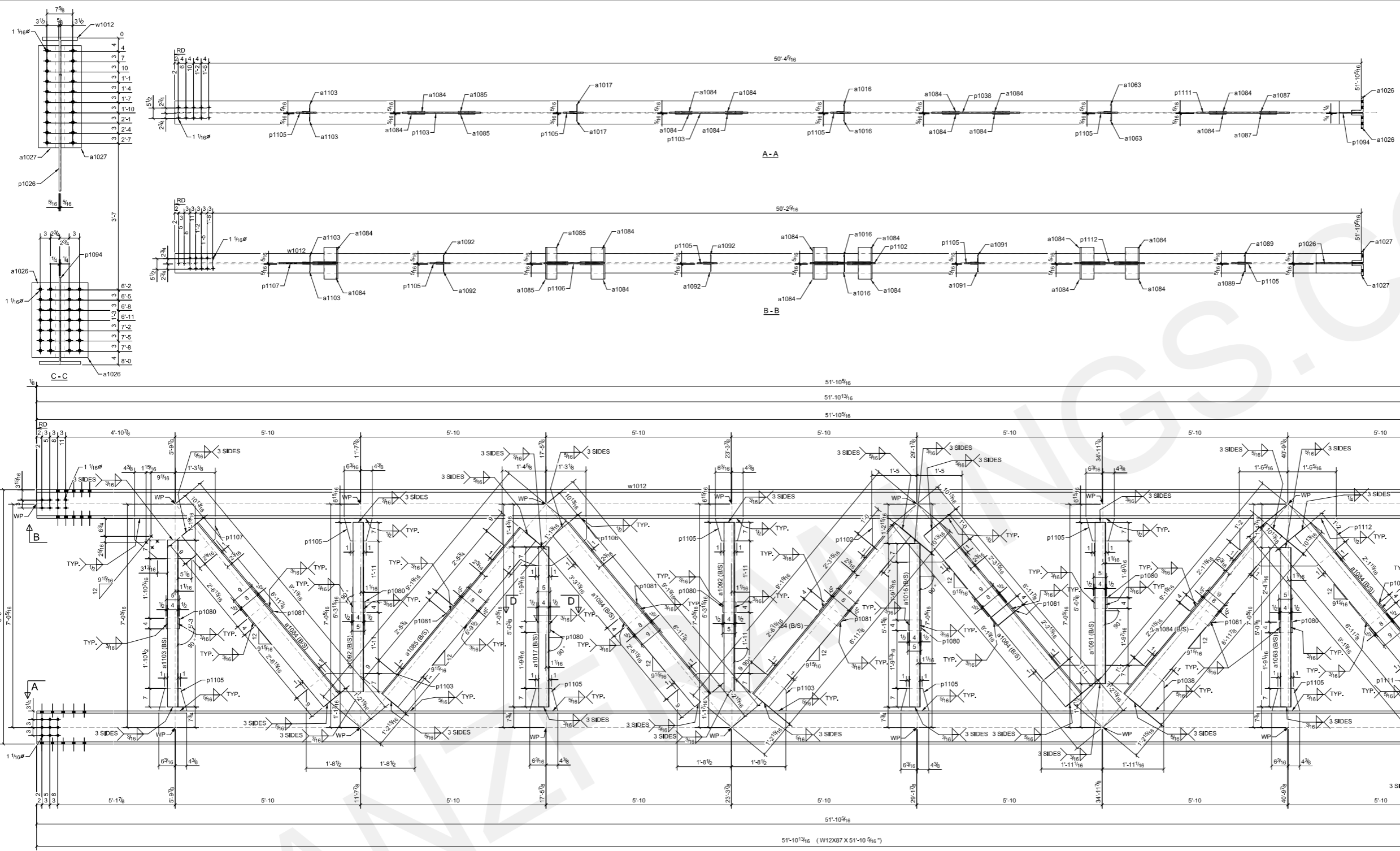
**BILL OF MATERIAL**

SHIP MARK	PIECE MARK	QTY	DESCRIPTION	LENGTH	REMARKS
C131		1	W10X39	28'-1 1/2"	S&2 A92
	a1018	2	L6X4X3/8	1'-11"	A36
	p1044	1	PL5/8"X12 5/16"	1'-2 1/16"	A36
	p1068	1	PL3/8"X10 3/16"	1'-4 13/16"	A36
	p1071	1	PL3/8"X3 1/2"	1'-0"	A36
	p1084	1	PL1"X18"	1'-0"	A36
			FIELD BOLTS (EXACT COUNT)		
		6	3/4" A325N	0'-2"	Site



ONE - COLUMN - C131

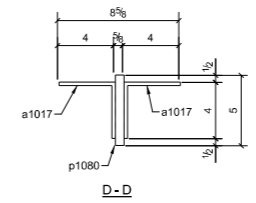
6	3/4" Φ x 2"
---	-------------



BILL OF MATERIAL					
SHIP MARK	PIECE MARK	QTY	DESCRIPTION	LENGTH	REMARKS
TR156		1	W12X87	51'-10 5/16"	S02 A82
	a1016	2	L4X4X1/4	5'-1 5/8"	A36
	a1017	2	L4X4X1/4	5'-0 3/8"	A36
	a1026	2	L8X8X1	1'-10"	A36
	a1027	2	L6X6X1	2'-6"	A36
	a1063	2	L4X4X1/4	5'-0 1/8"	A36
	a1084	12	L8X8X1/2	6'-11 7/8"	A36
	a1085	2	L8X8X1/2	6'-9 1/2"	A36
	a1087	2	L8X8X1/2	5'-3 11/16"	A36
	a1089	2	L4X4X1/4	4'-11 5/16"	A36
	a1091	2	L4X4X1/4	5'-0 7/8"	A36
	a1092	4	L4X4X1/4	5'-3 15/16"	A36
	a1103	2	L4X4X1/4	5'-3"	A36
	p1026	1	PL5/8"X24 1/4"	2'-10 5/16"	A36
	p1038	1	PL5/8"X17 1/4"	3'-10 3/16"	A36
	p1080	8	PL5/8"X4"	0'-5"	A36
	p1081	8	PL5/8"X4"	0'-9"	A36
	p1094	1	PL1/2"X12"	1'-1"	A36
	p1102	1	PL5/8"X16 1/2"	2'-10 1/16"	A36
	p1103	2	PL5/8"X14 3/16"	3'-5 1/16"	A36
	p1105	8	PL5/8"X8 1/2"	0'-10 9/16"	A36
	p1106	1	PL5/8"X17 3/4"	2'-7 11/16"	A36
	p1107	1	PL5/8"X15 3/16"	2'-8 7/16"	A36
	p1111	1	PL5/8"X18 13/16"	4'-0 3/4"	A36
	p1112	1	PL5/8"X18"	3'-0 9/16"	A36
	w1012	1	W10XB8	51'-10 5/16"	A82
			FIELD BOLTS (EXACT COUNT)		
		4	3/4" A325N	0'-2 3/4"	Site
		48	1" A490N	0'-3 1/4"	Site

ONE - TRUSS - TR156

4	3/4"Φ x 2 3/4"
48	1"Φ x 3 1/4"



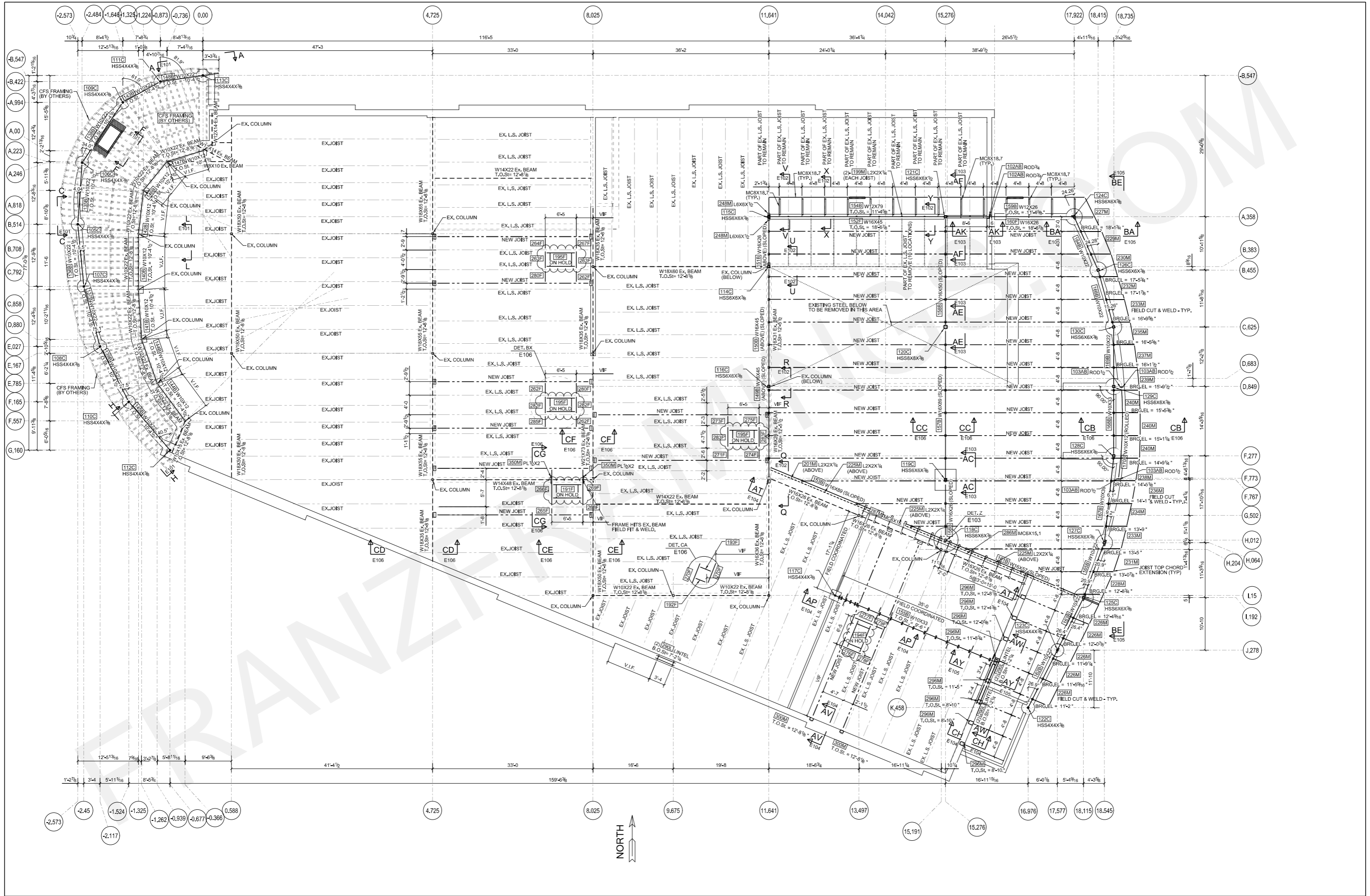


## STATE INSTITUTION BUILDING

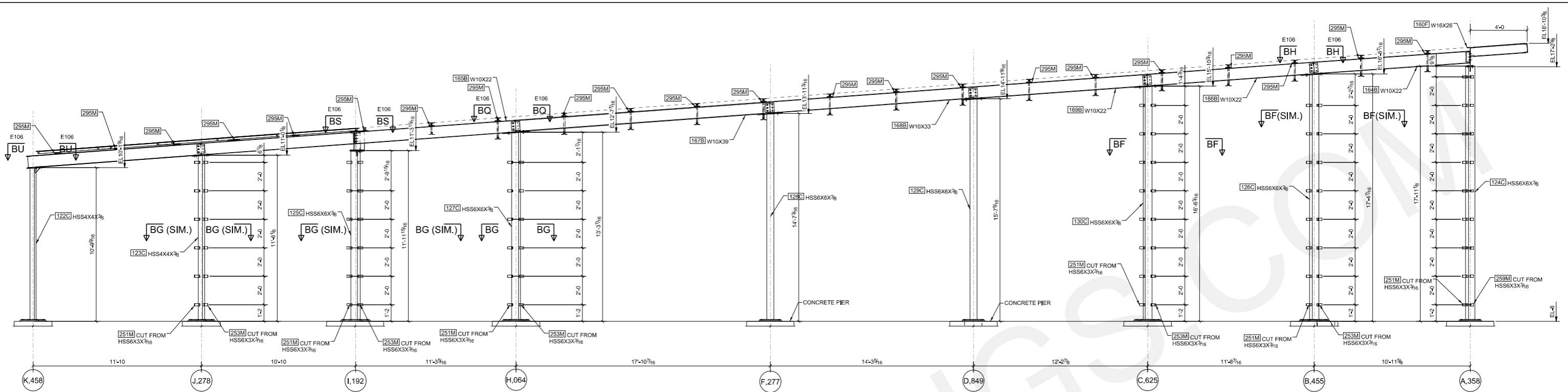
### SCOPE OF WORK:

- ANCHOR BOLTS
- STEEL COLUMNS
- STEEL BEAMS
- BEARING PLATES
- SLAB SUPPORT ANGLES
- ROOF FRAMES.



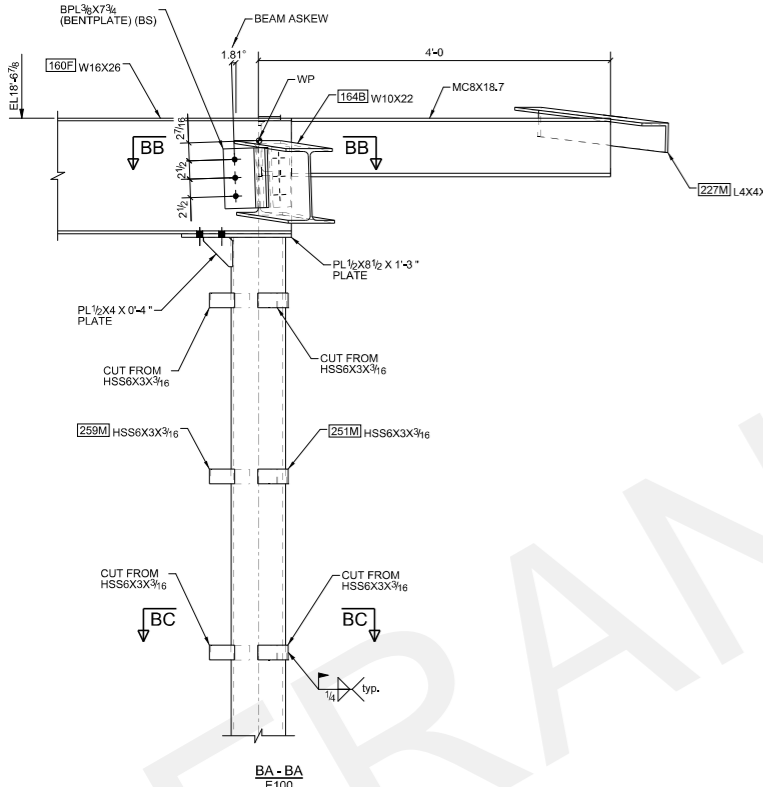




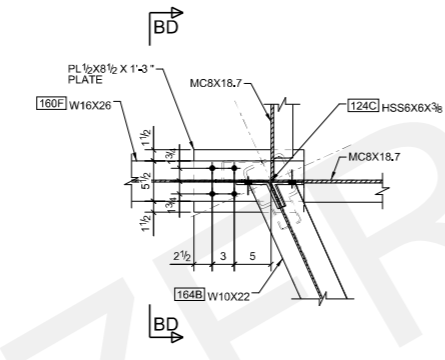


**BE - BE**  
E100

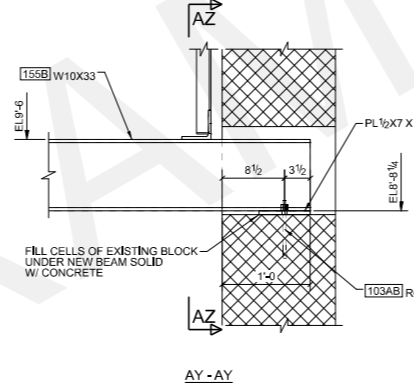
NOTE: ALL BRACKETS TO BE SHIPPED LOOSE,  
FITTED IN FIELD, WHEN COLUMNS COVERS  
ARRIVE ON SITE, CUT, GRIND, WELD IN FIELD



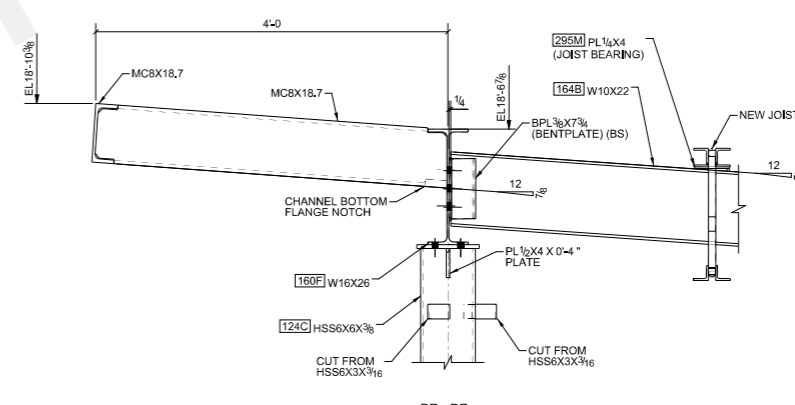
**BA - BA**  
E100



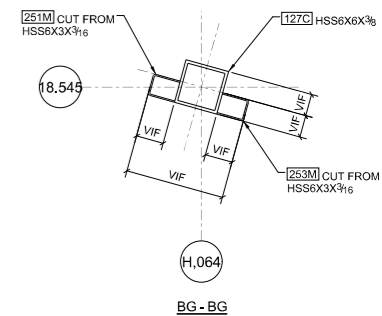
**BB - BB**



**AZ - AZ**  
E100

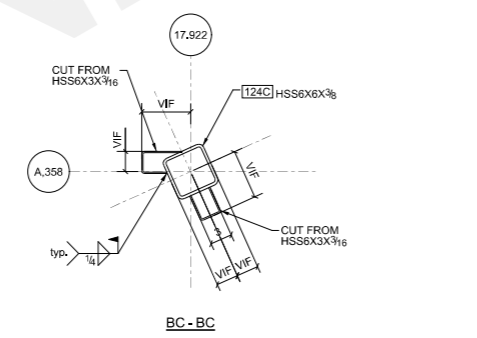


**BD - BD**



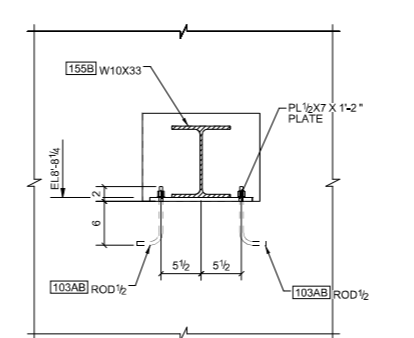
**BG - BG**

NOTE: ALL BRACKETS TO BE SHIPPED LOOSE,  
FITTED IN FIELD, WHEN COLUMNS COVERS  
ARRIVE ON SITE, CUT, GRIND, WELD IN FIELD

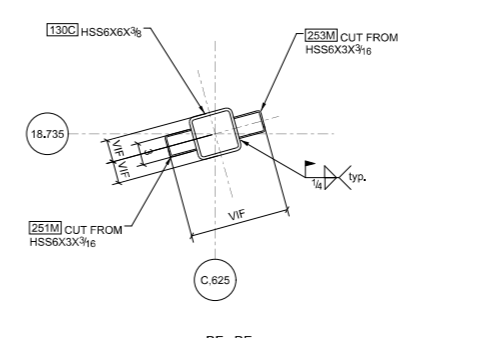


**BC - BC**

NOTE: ALL BRACKETS TO BE SHIPPED LOOSE,  
FITTED IN FIELD, WHEN COLUMNS COVERS  
ARRIVE ON SITE, CUT, GRIND, WELD IN FIELD



**AZ - AZ**

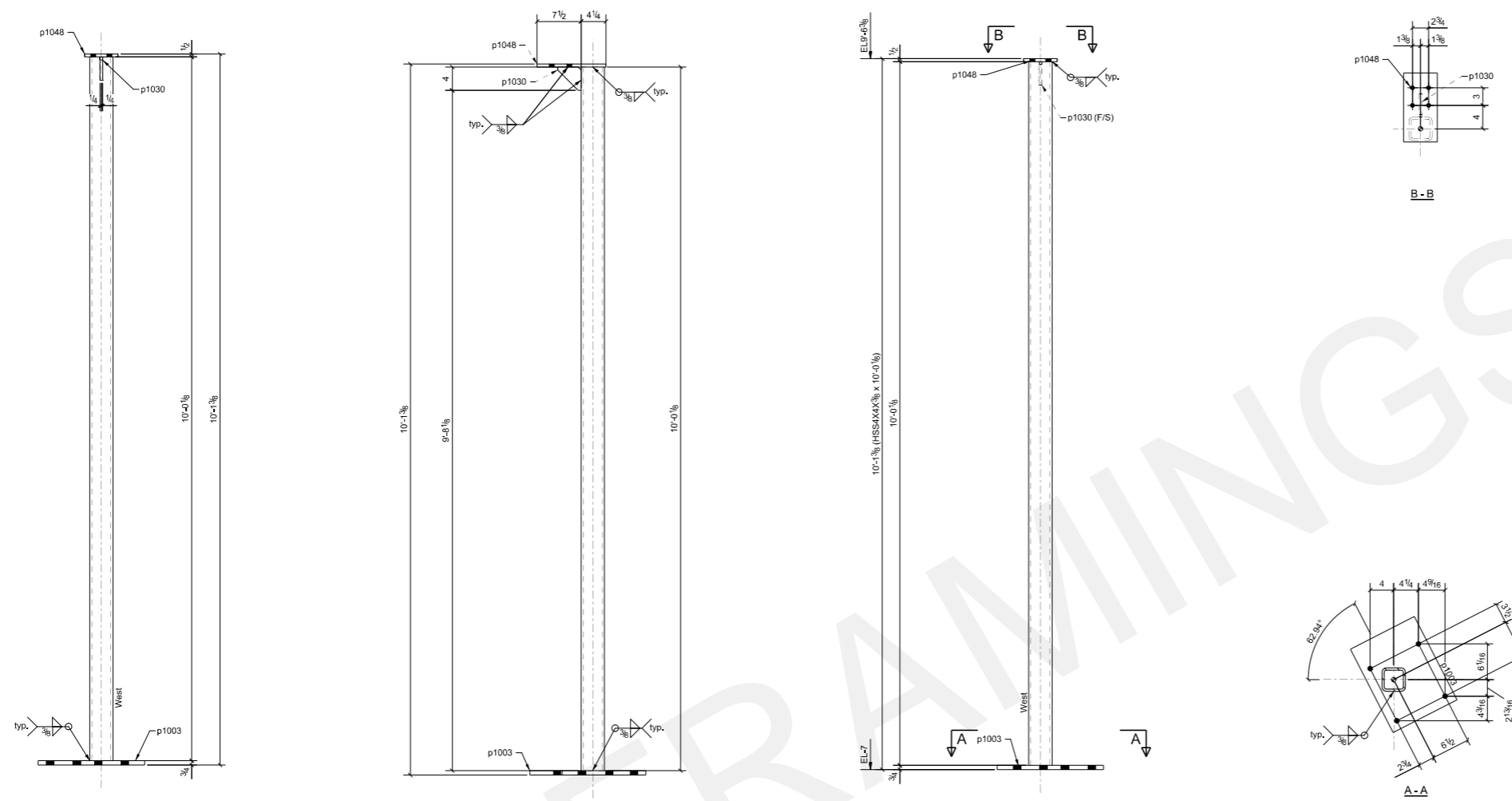


**BF - BF**

NOTE: ALL BRACKETS TO BE SHIPPED LOOSE,  
FITTED IN FIELD, WHEN COLUMNS COVERS  
ARRIVE ON SITE, CUT, GRIND, WELD IN FIELD

**BILL OF MATERIAL**

SHIP MARK	PIECE MARK	QTY	DESCRIPTION	LENGTH	REMARKS
112C		1	HSS4x4x3/8	10'-0 1/8"	502 A30-CR-B
	p1003	1	PL3/4x12'1/4	1'-4"	A36
	p1030	1	PL1/2x4"	0'-4"	A36
	p1048	1	PL1/2x5'3/4	0'-11 3/4"	A36
			FIELD BOLTS (EXACT COUNT)		
		4	3/4"Φ HILTI HY-200 BOLT	0'-10"	Site
		4	3/4"Φ A325N BOLT	0'-2"	Site



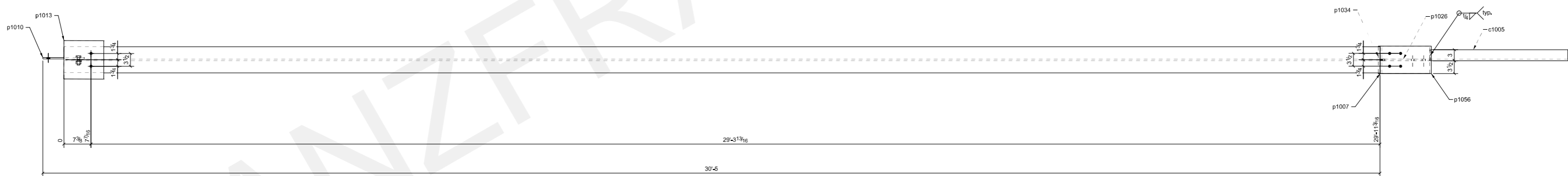
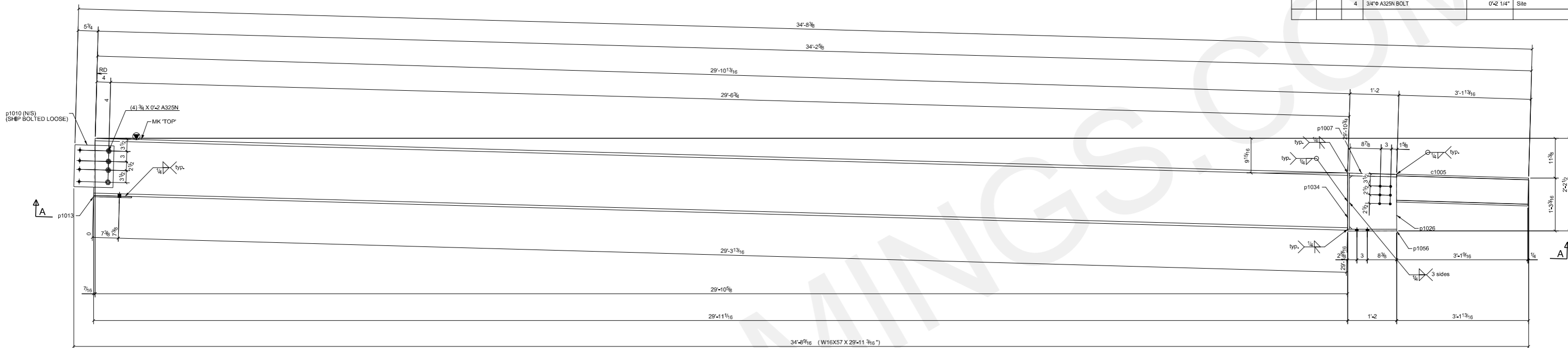
ONE - COLUMN - 112C

4	3/4"Φ x 10"	HILTI HY-200
4	3/4"Φ x 2"	



**BILL OF MATERIAL**

SHIP MARK	PIECE MARK	QTY	DESCRIPTION	LENGTH	REMARKS
161B		1	W16X57	29'-11 3/16"	SO-BELOW ABSE
	c1005	1	MC8X18.7	3'-1 13/16"	A36
	p1007	1	PL3/4X7"1/2	1'-1 1/2"	A36
	p1010	1	PL3/8X11"1/4	1'-0"	A36
	p1013	1	PL3/8X10"1/2	0'-10 7/8"	A36
	p1026	1	PL1/2X13"1/2	1'-3 5/16"	A36
	p1034	1	PL1/2X7"1/2	1'-4 1/8"	A36
	p1056	1	PL1/2X7"1/2	1'-2"	A36
		4	3/4"Φ A325N BOLT	0'-2"	Workshop
			FIELD BOLTS (EXACT COUNT)		
		4	3/4"Φ A325N BOLT	0'-2"	Site
		2	3/4"Φ A325N BOLT	0'-2 3/4"	Site
		4	3/4"Φ A325N BOLT	0'-2 1/4"	Site



A-A

ONE - BEAM - 161B

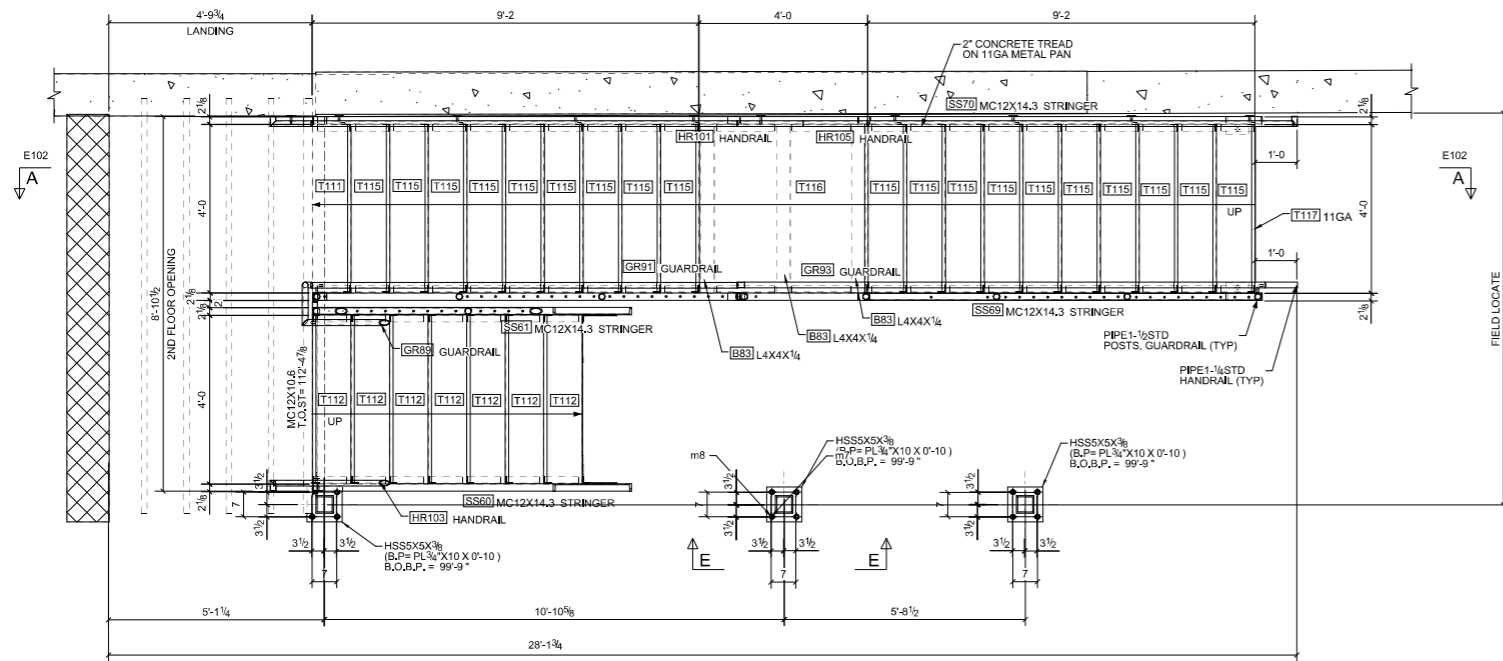
4	3/4"Φ x 2"
2	3/4"Φ x 2 3/4"
4	3/4"Φ x 2 1/4"

## APARTMENT STAIR

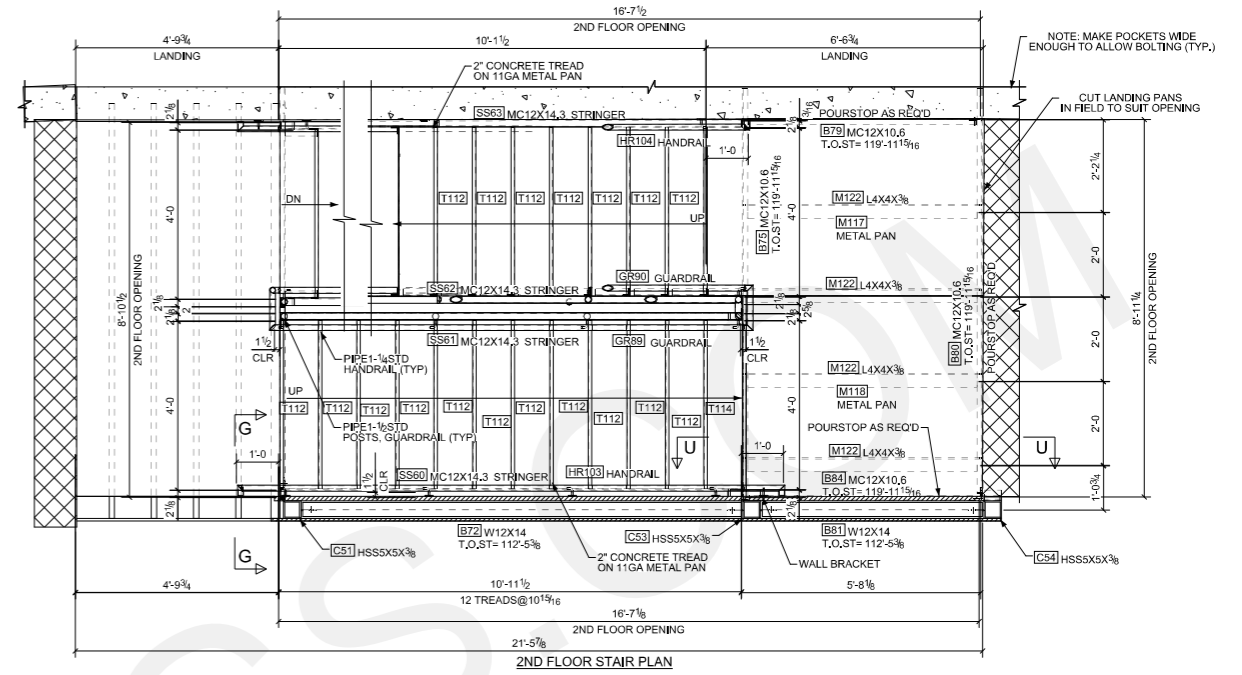
### SCOPE OF WORK:

- STEEL POSTS
- STEEL STRINGERS
- STEEL HEADERS
- BEARING PLATES
- METAL PAN TREADS
- RAILINGS.

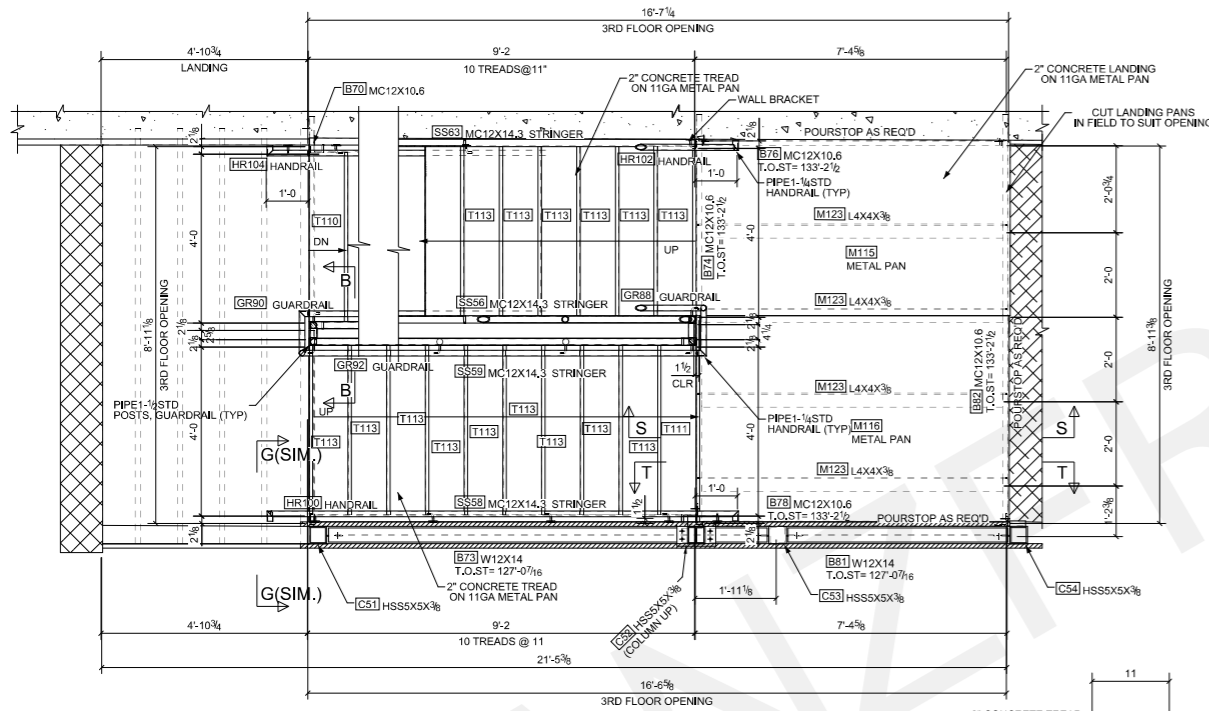




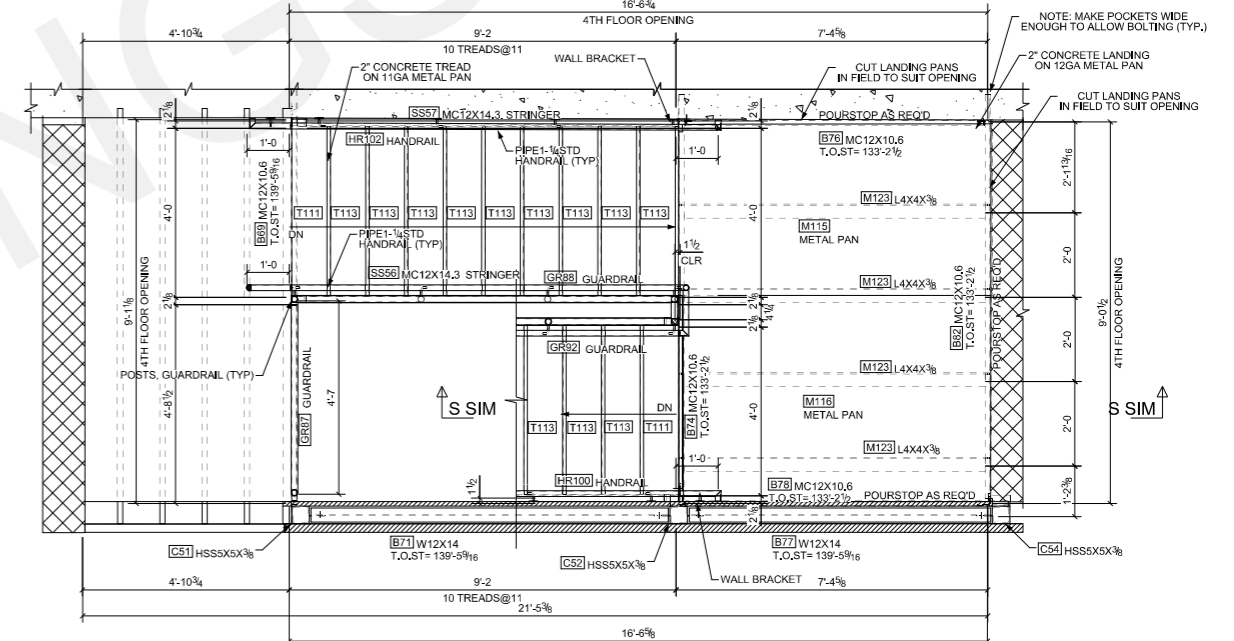
1ST FLOOR STAIR PLAN



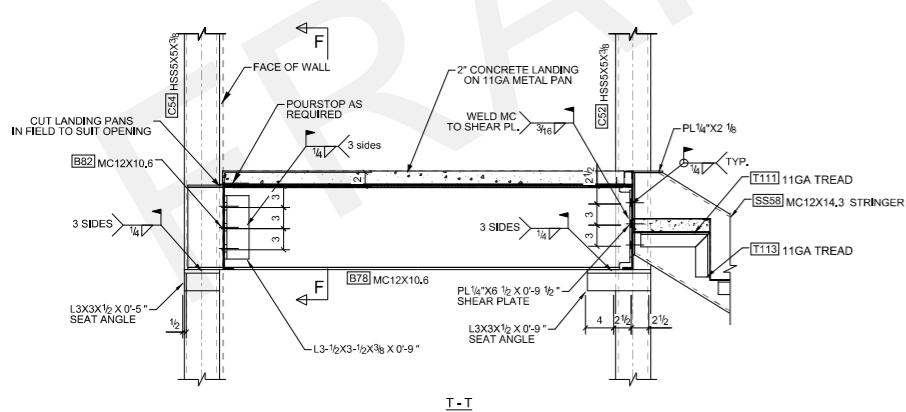
2ND FLOOR STAIR PLAN



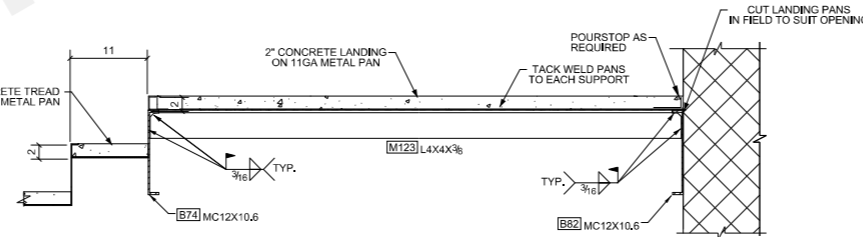
3RD FLOOR STAIR PLAN



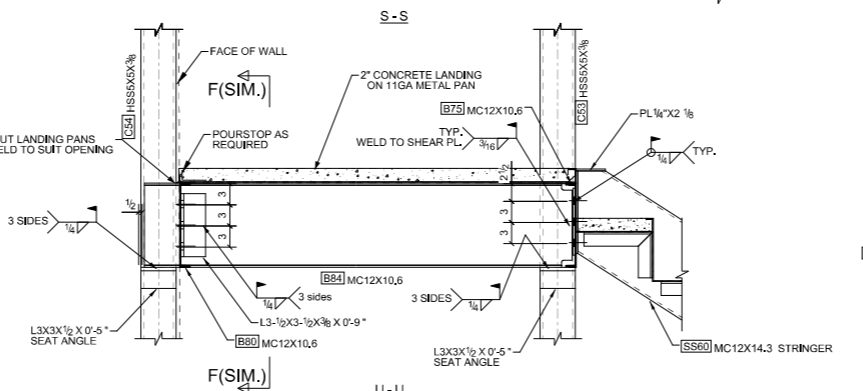
4TH FLOOR STAIR PLAN



T-T

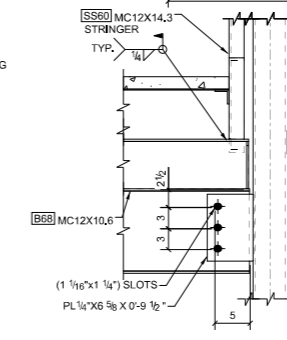


S-S

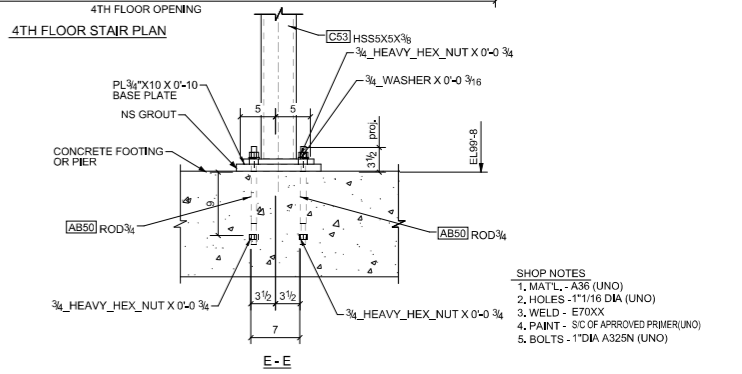


F(SIM.)

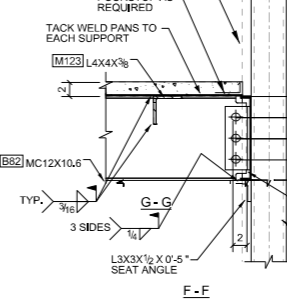
U-U



G(SIM.)

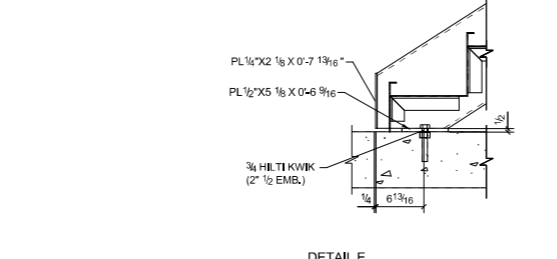
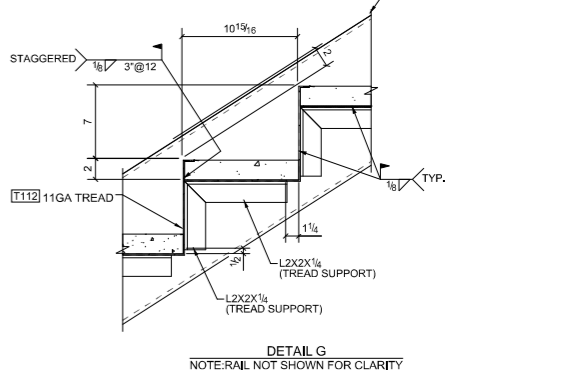
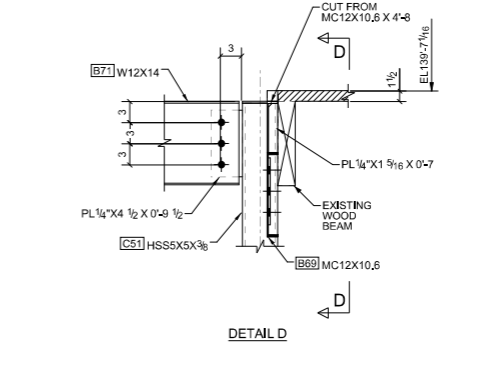
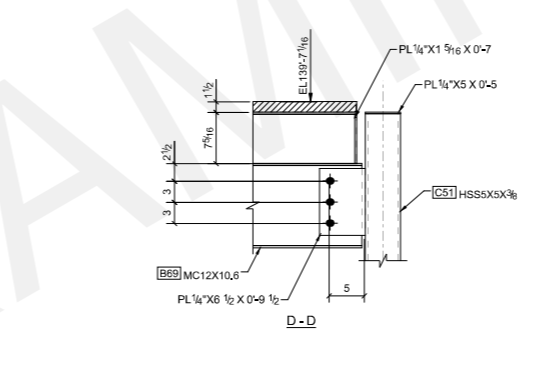
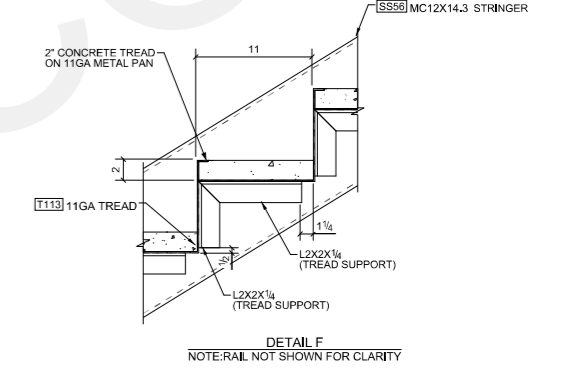
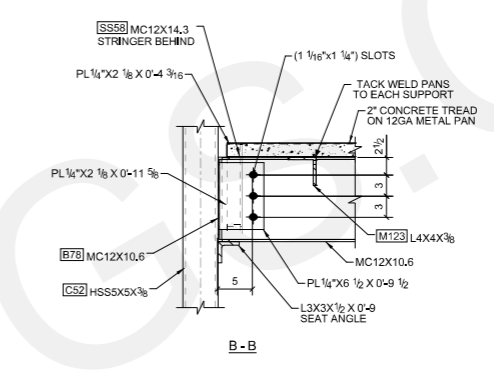
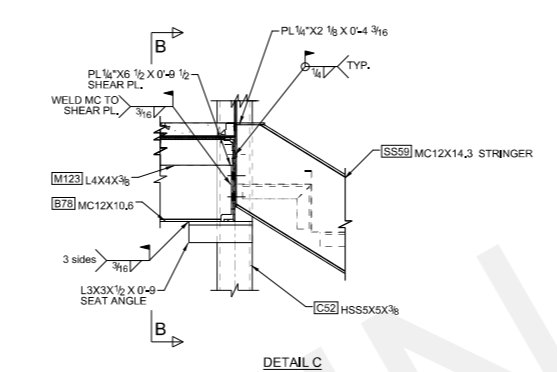
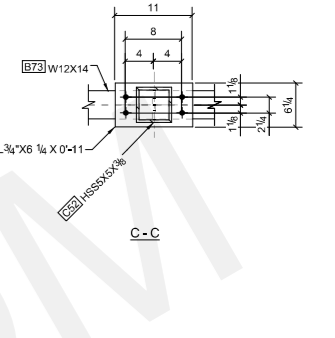
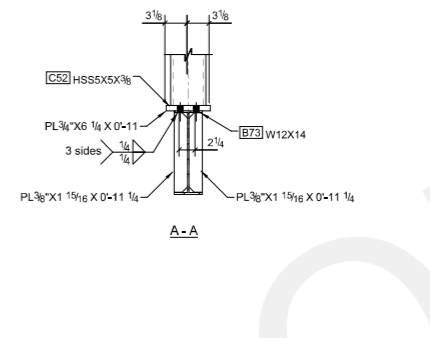
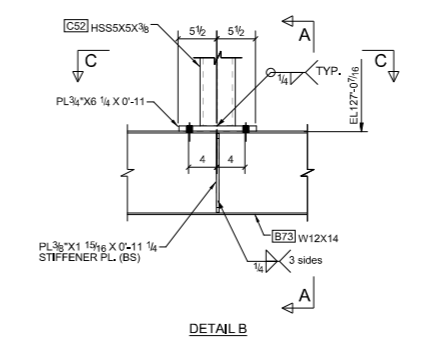
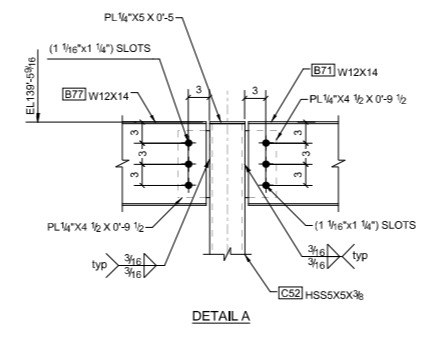
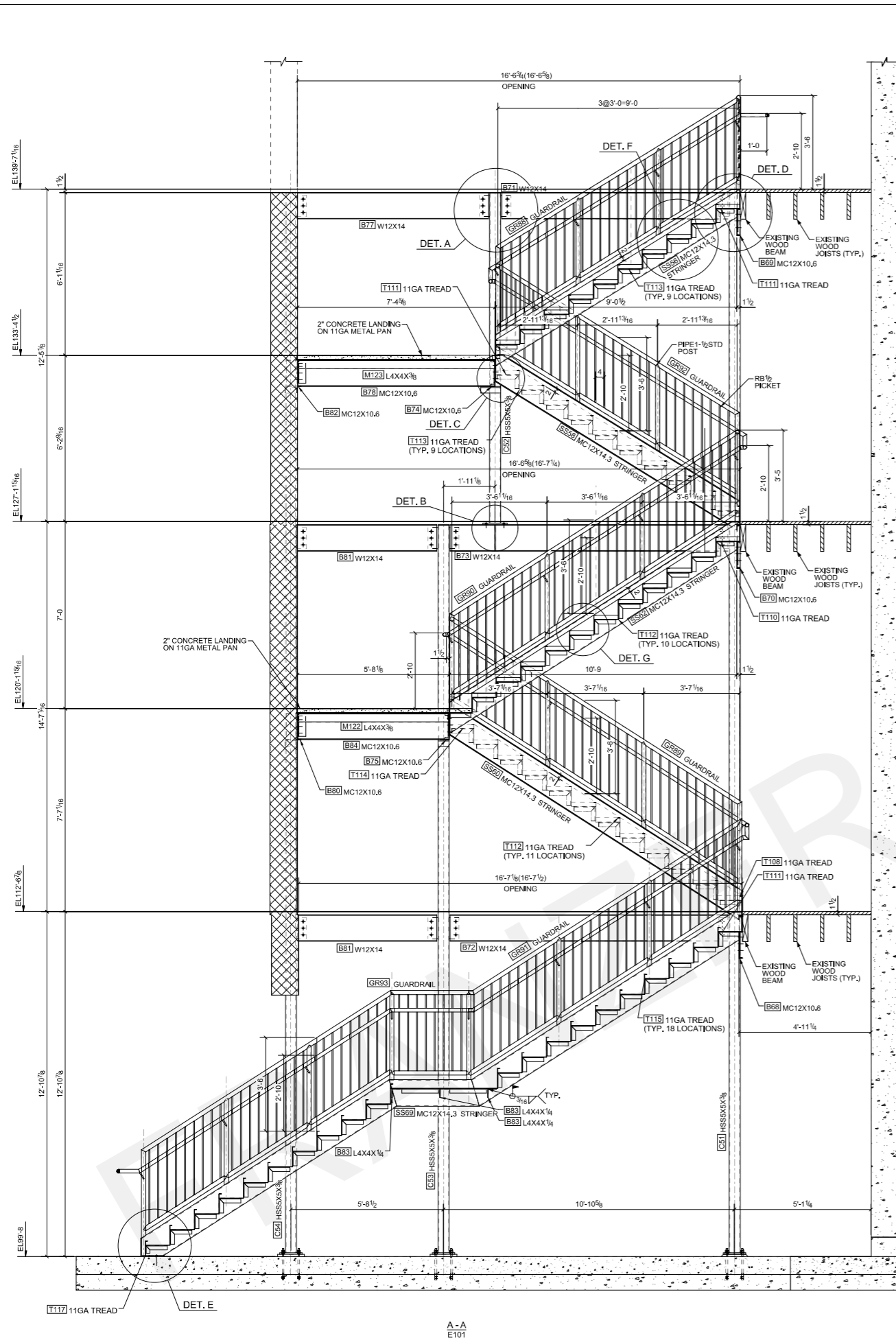


E-E



F-F

- SHOP NOTES**
- 1. MTL. - A36 (UNO)
  - 2. HOLES - 1/16 DIA (UNO)
  - 3. WELD - E70XX
  - 4. PAINT - S/C OF APPROVED PRIMER (UNO)
  - 5. BOLTS - 1" DIA A325N (UNO)



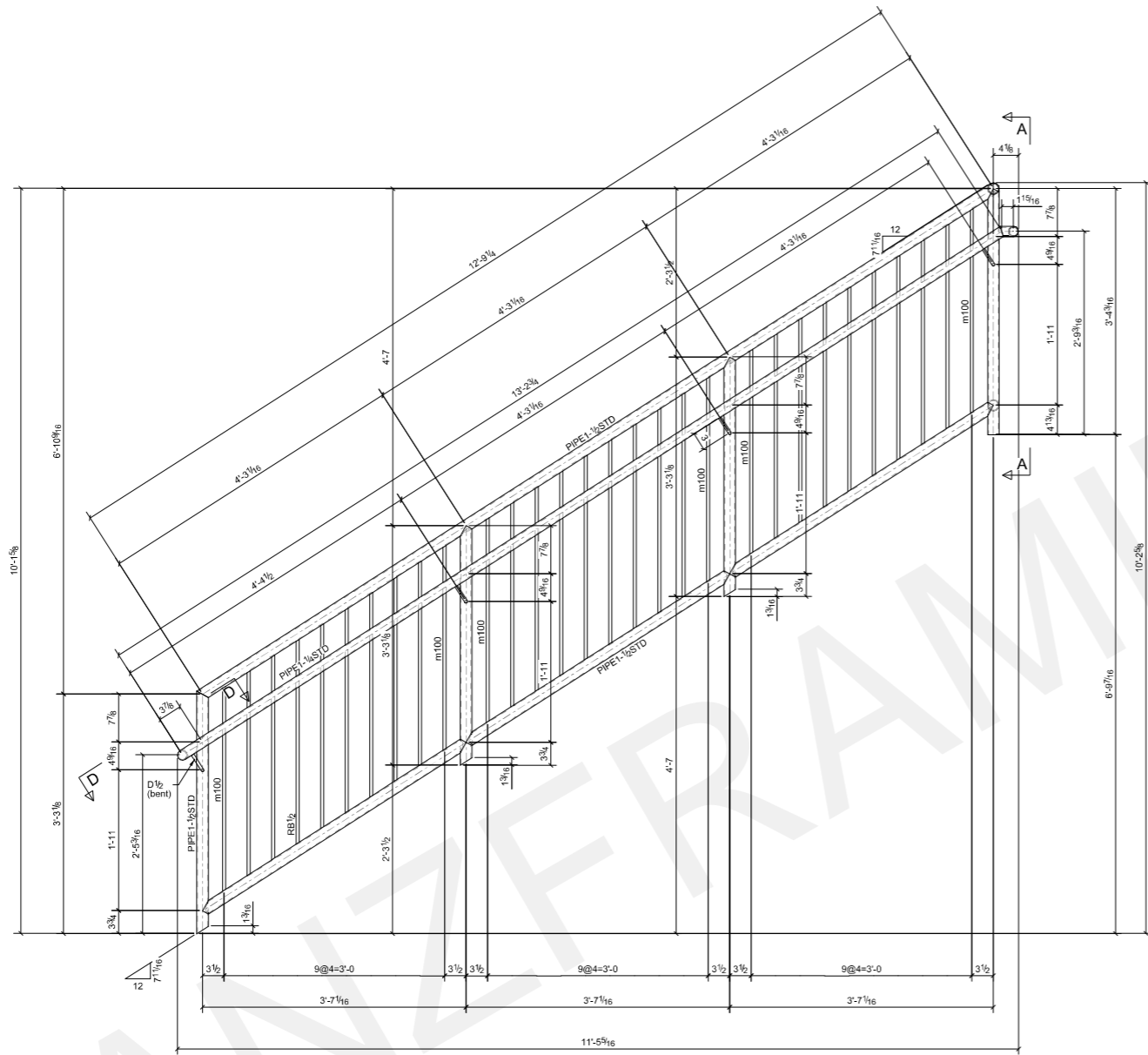
- SHOP NOTES
1. MAT'L - A36 (UNO)
  2. HOLES - 1/16 DIA (UNO)
  3. WELD - E70XX
  4. PAINT - SIC OF APPROVED PRIMER (UNO)
  5. BOLTS - 1/2\"/>



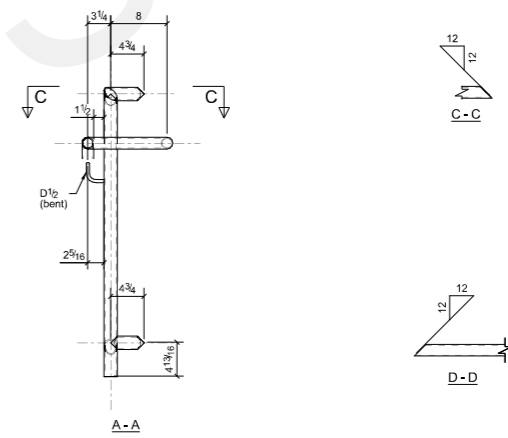




BILL OF MATERIAL					
MARK	QTY	DESCRIPTION	LENGTH	GRADE	REMARKS
GR89	1	GUARDRAIL		A53	
		PIPE1-1/2STD	39'-8 7/16"	A53	Total Length
		PIPE1-1/4STD	14'-7 3/4"	A53	Total Length
		D1/2"	1'-7 1/16"	A36	Total Length
		RB1/2"	83'-7 3/16"	A36	Total Length



ALL SHARP ENDS TO BE ROUNDED



**ONE - GUARDRAIL - GR89**

- 1 - PIPE1-1/2STD x 39'-8 7/16" (ABT)
  - 1 - PIPE1-1/4STD x 14'-7 3/4" (ABT)
  - 1 - RB1/2" x 83'-7 3/16" (ABT) picket.
- (CUT&WELD TO SUIT)